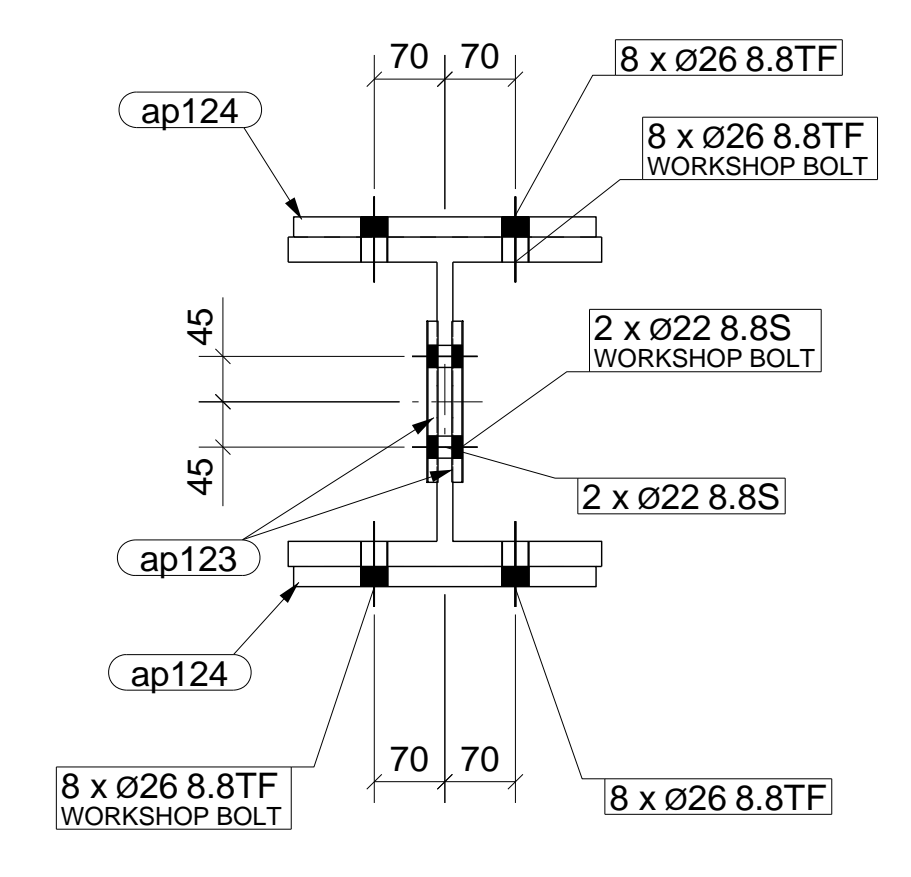
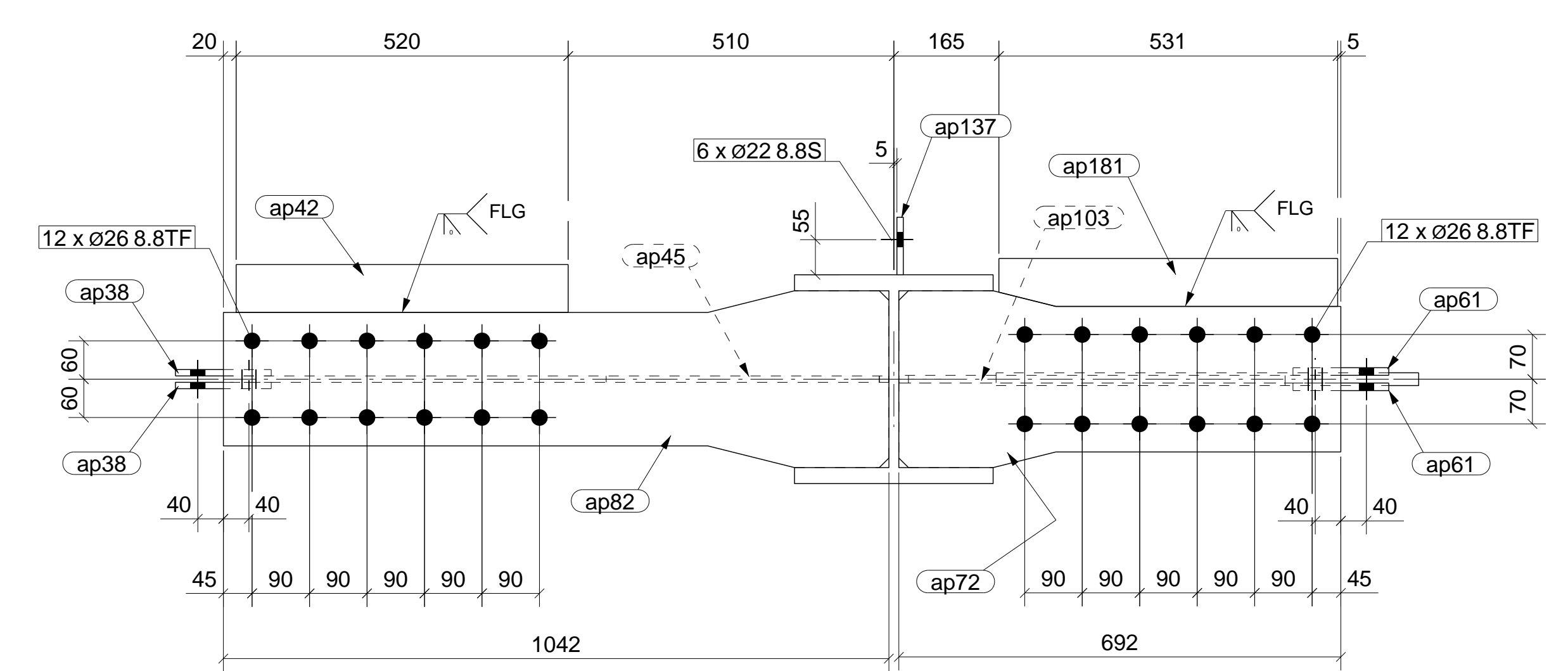
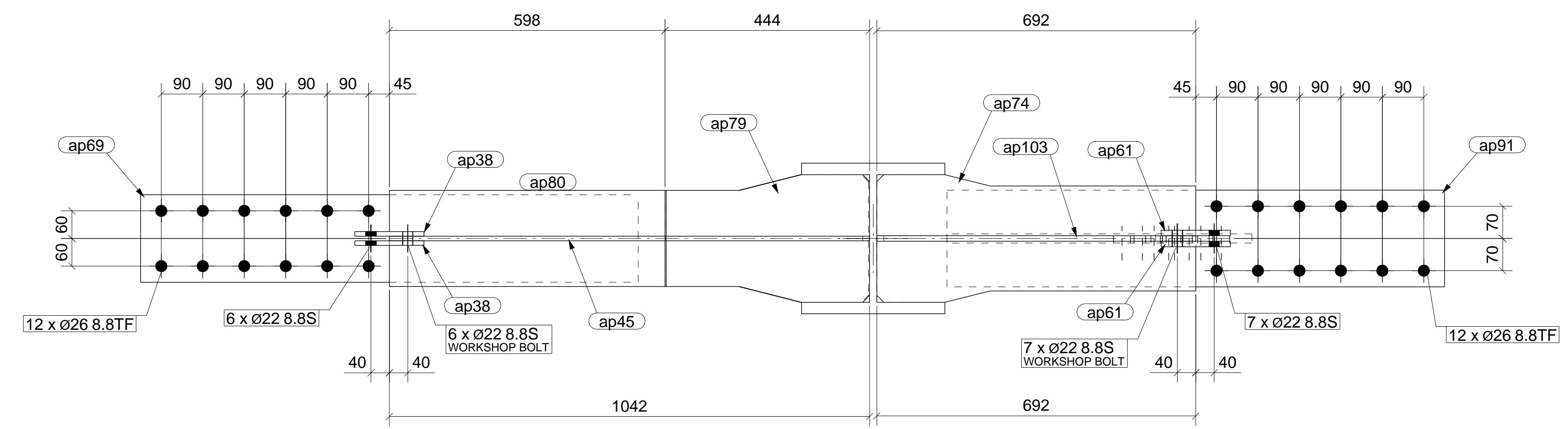
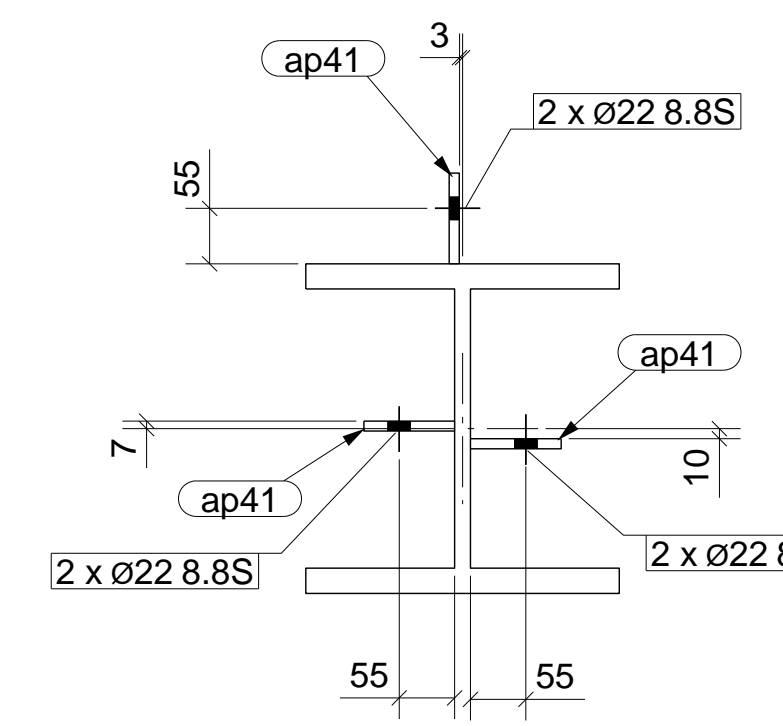
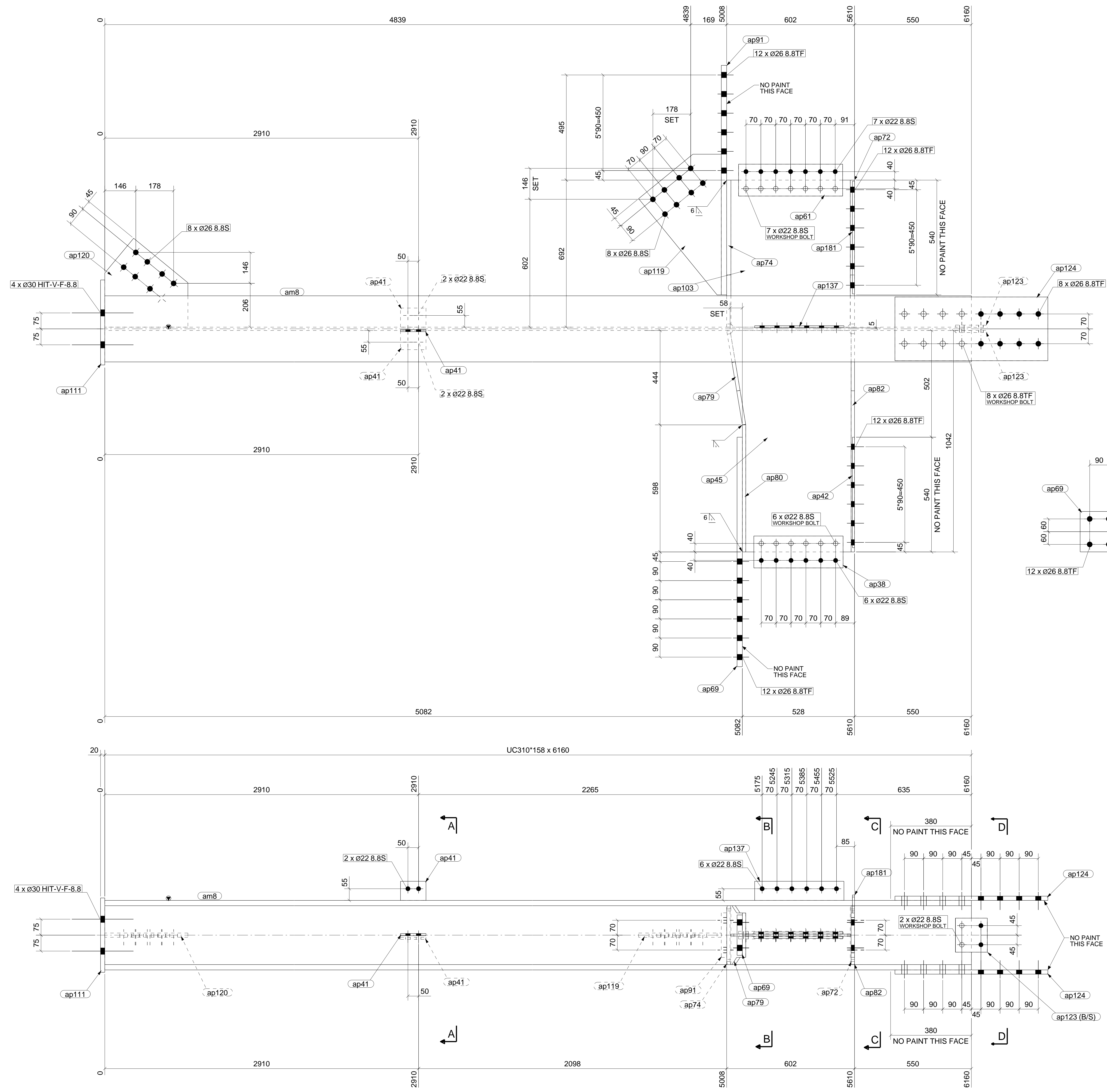


MATERIAL LIST FOR ONE ASSEMBLY MK'D						1C2	1 Ass. Req'd.
ITEM	No.	SECTION	GRADE	LENGTH	AREA(m <sup>2</sup> )	WEIGHT(kg)	
am8	1	UC310*158	300PLUS	6160	11.33	972.0	
ap38	2	FLT10*150	250	420	0.14	9.9	
ap41	3	FLT10*90	250	120	0.03	2.5	
ap42	1	FLT10*75	300+	520	0.09	3.1	
ap45	1	PLT10*567	250	1042	1.10	41.8	
ap61	2	FLT12*150	250	490	0.16	13.8	
ap69	1	PLT25*190	250	1080	0.47	40.3	
ap72	1	PLT20*277	250	692	0.37	26.3	
ap74	1	PLT20*277	250	692	0.37	26.3	
ap79	1	PLT16*277	250	447	0.24	13.6	
ap80	1	PLT16*209	250	598	0.28	15.7	
ap82	1	PLT16*277	250	1042	0.51	29.2	
ap91	1	PLT25*210	250	1080	0.52	44.5	
ap103	1	PLT12*562	250	692	0.81	36.6	
ap111	1	PLT20*350	250	400	0.31	22.0	
ap119	1	PLT20*389	250	662	0.33	23.1	
ap120	1	PLT20*391	250	418	0.28	19.8	
ap123	2	FLT10*150	250	160	0.05	3.8	
ap124	2	PLT20*300	250	720	0.47	67.8	
ap137	1	FLT10*90	250	420	0.09	3.0	
ap181	1	FLT10*75	300+	531	0.09	3.0	
TOTAL						18.03	1418.0



1 COLUMN (S) REQUIRED MK 1C2

GENERAL NOTES

- WELDS & CONT. FILLET (CAT. SP) UNLESS NOTED.
- ALL BOLT WELDS TO BE FULL PENETRATION (CAT. SP) UNLESS NOTED.
- ALL NOTCHES TO HAVE 11mm RADIUS AT INTERNAL CORNERS.
- NO PAINT IN WAY OF FF BOLT CONNECTIONS.
- THIRD ANGLE PROJECTION UNLESS NOTED.
- ASSEMBLY MARK TO BE STAMPED ON TOP FACE WHERE INDICATED THUS: N.S. F.S.
- ALL HOLES Ø2 UNL.D.

PAINT : PRIMER  
PRECAMBER :

ERECTION PLAN REFERENCE:  
4526-MP-03

Xtech Drafting Pty. L td.

14/37 - 39 ALBERT RD. MELBOURNE, VIC. AUSTRALIA. 3004  
PH. +61 3 9866 1015. FAX. +61 3 9866 1016. MOB. 0411 566 698

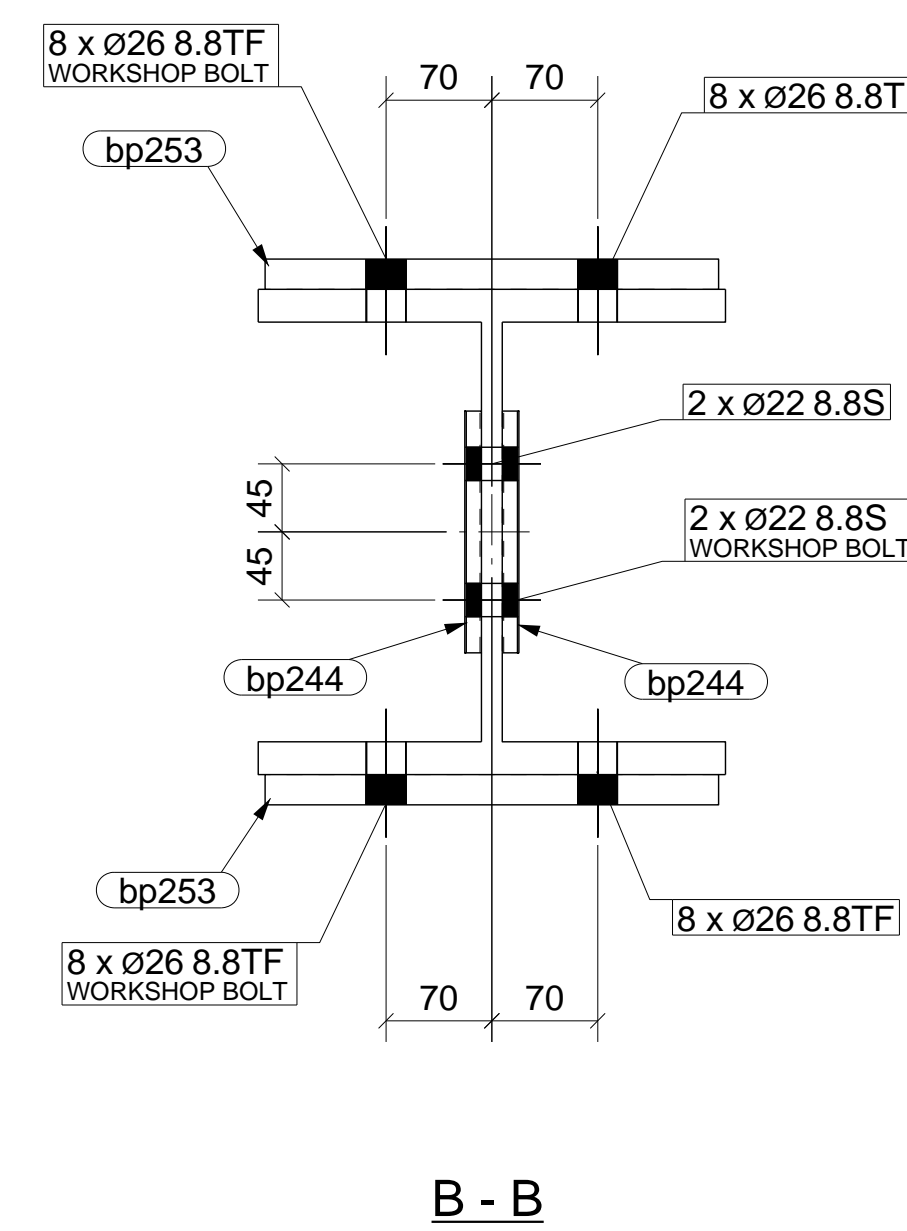
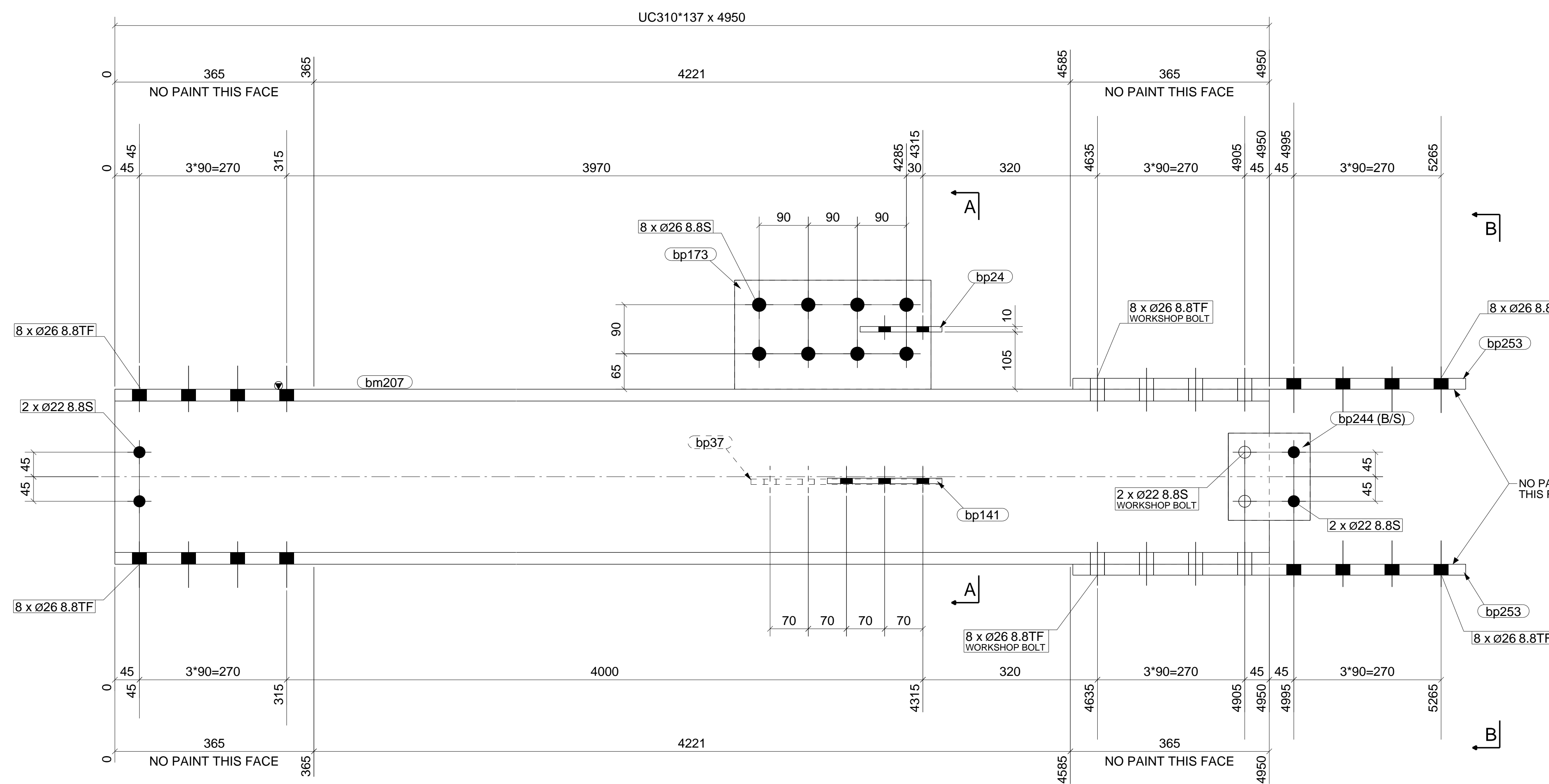
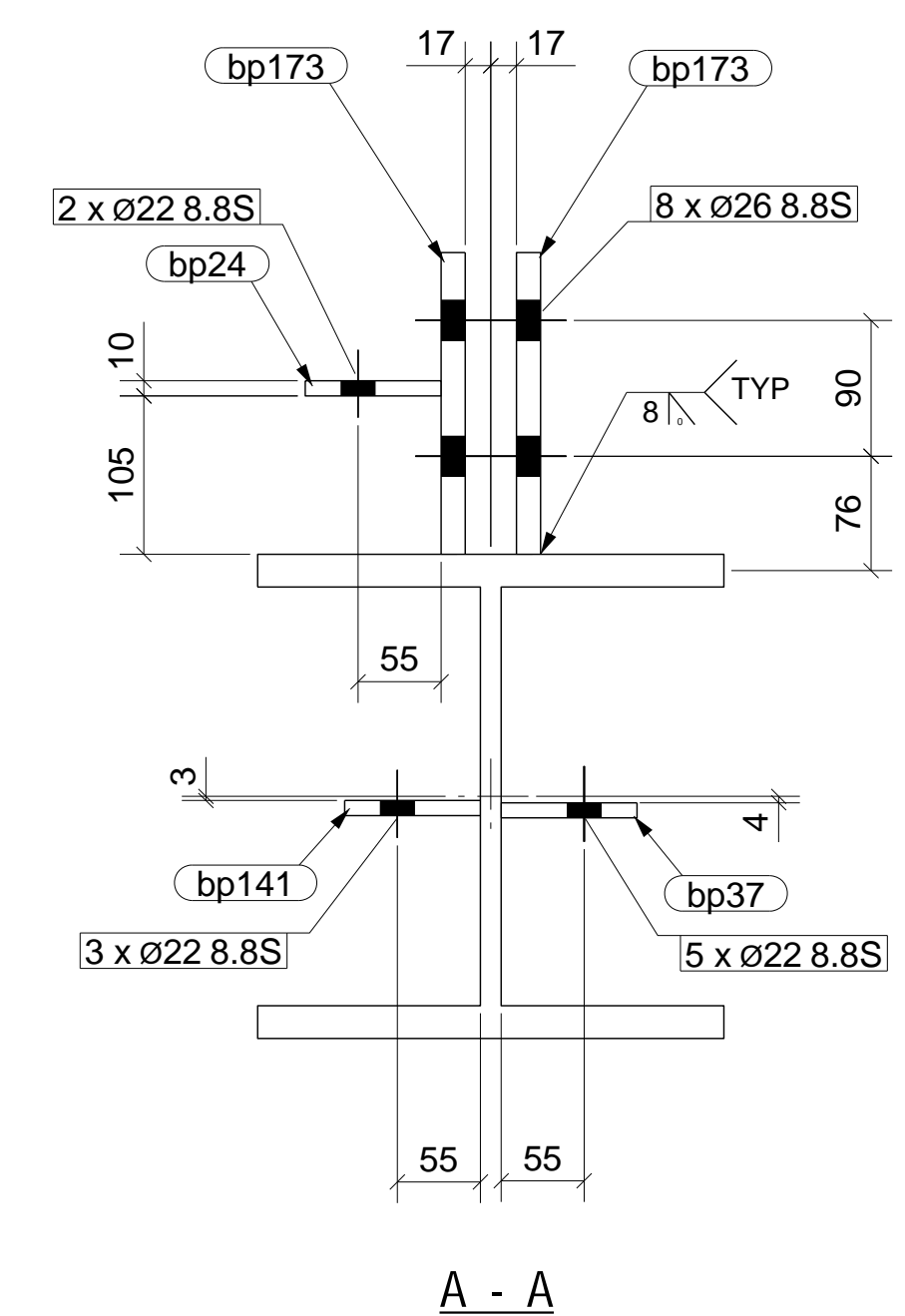
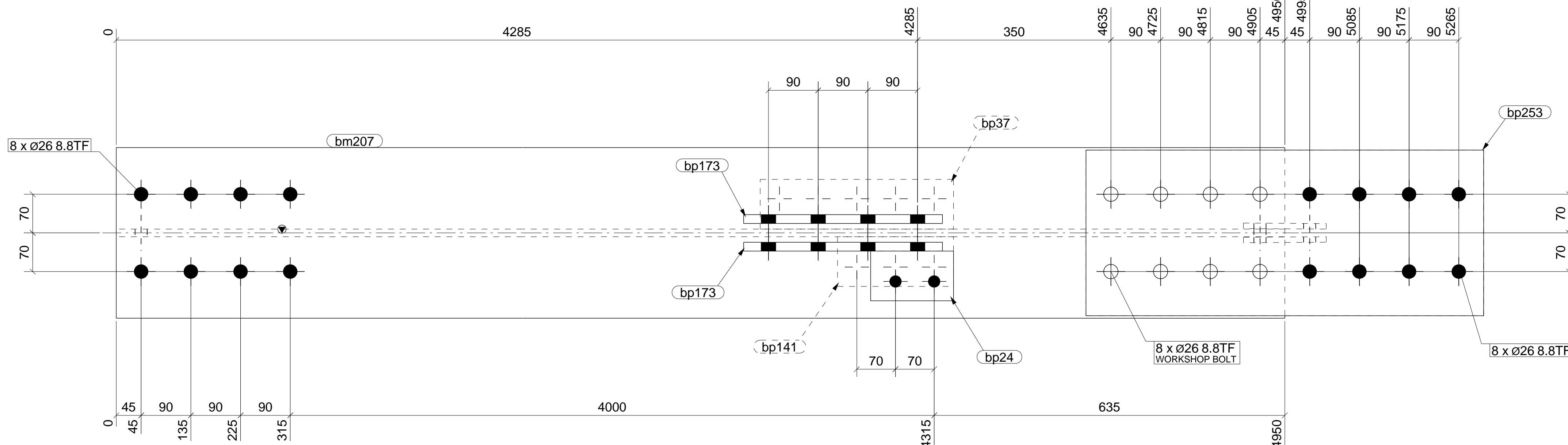
DESIGN ENGINEER:

BORAL PLASTERBOARD  
COMPOUND BATCHING PLANT  
LEVEL 1A  
COLUMN

DRAWN:	CHECKED:	DATE:	SCALE:	DRAWING No.	REV.
AWM	XTD	20.01.12	1:7.5	4526-1C2	A

No.	REV.	ISSUED FOR APPROVAL DESCRIPTION	DATE
1	A	ISSUED FOR APPROVAL	20.01.12

MATERIAL LIST FOR ONE ASSEMBLY MK'D				2C2	1 Ass. Req'd.	
ITEM	No.	SECTION	GRADE	LENGTH	AREA(m <sup>2</sup> )	WEIGHT(kg)
bm207	1	UC310*137	300PLUS	4950	9.01	680.0
bp24	1	FLT10*90	250	150	0.03	1.1
bp37	1	FLT10*90	250	350	0.07	2.5
bp141	1	FLT10*90	250	210	0.04	1.5
bp173	2	FLT16*200	250	360	0.16	18.1
bp244	2	FLT10*150	250	160	0.05	3.8
bp253	2	PLT20*300	250	720	0.47	67.8
TOTAL					9.85	774.7



1 COLUMN (S) REQUIRED MK 2C2

- GENERAL NOTES**
- WELDS 6 CONT. FILLET (CAT. SP) UNLESS NOTED.
  - ALL BUTT WELDS TO BE FULL PENETRATION (CAT. SP) UNLESS NOTED.
  - ALL NOTCHES TO HAVE 11mm RADIUS AT INTERNAL CORNERS.
  - NO PAINT IN WAY OF TF BOLT CONNECTIONS.
  - THIRD ANGLE PROJECTION UNLESS NOTED.
  - ASSEMBLY MARK TO BE STAMPED ON TOP FACE WHERE INDICATED THIS N.S. F.S.
  - ALL HOLES Ø22 U.N.O.

PAINT : PRIMER  
PRECAMBER :

ERECTION PLAN REFERENCE:  
4526-MP-09

**Xtech Drafting Pty. L td.**  
A.B.N. 69 079 793 122  
14/37 - 39 ALBERT RD. MELBOURNE. VIC. AUSTRALIA. 3004  
PH. +61 3 9866 1015 FAX. +61 3 9866 1016 MOB. 0411 566 698

**BORAL PLASTERBOARD  
COMPOUND BATCHING PLANT  
LEVEL 2  
COLUMN**

DESIGN ENGINEER:

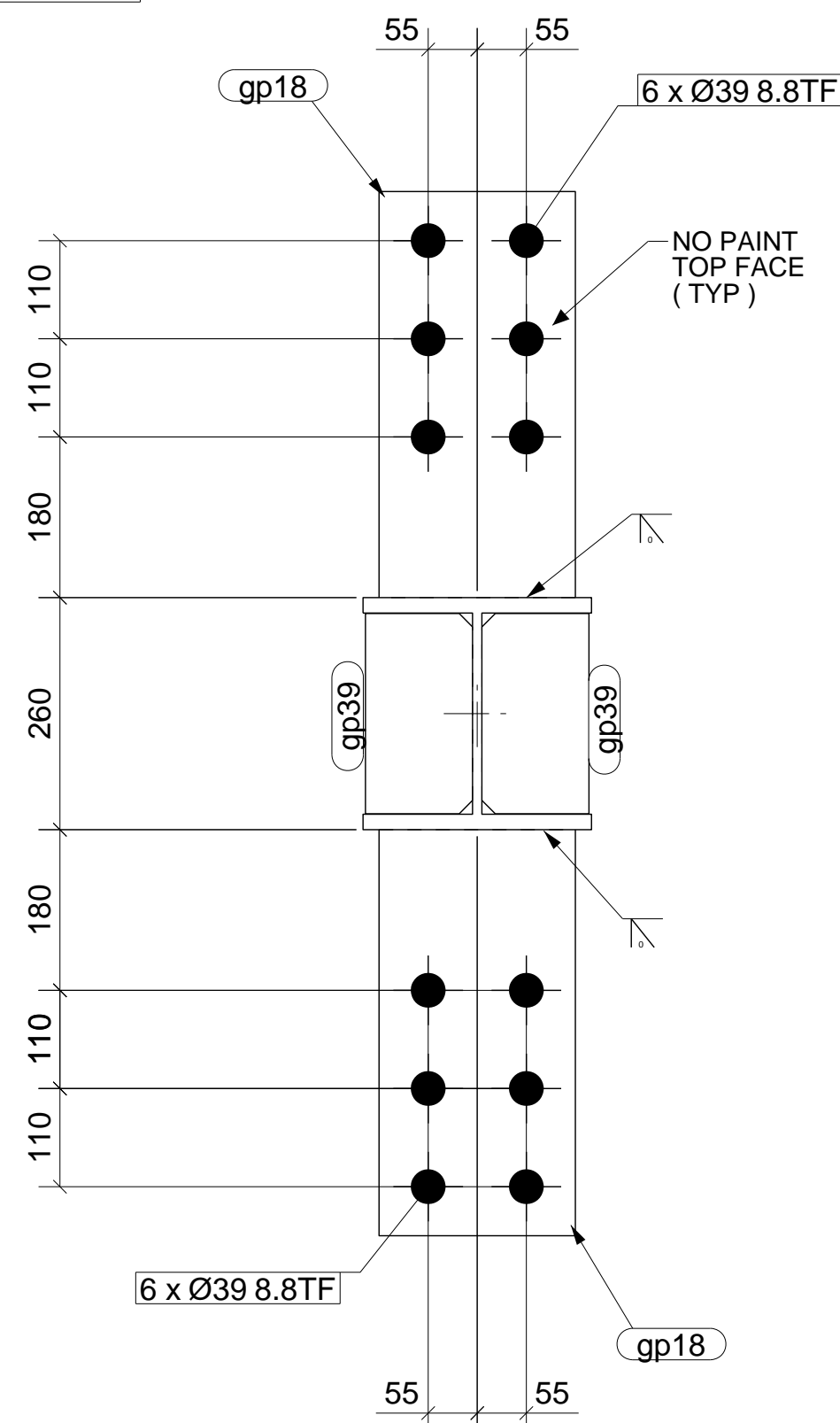
DRAWN: AWM

CHECKED: XTD

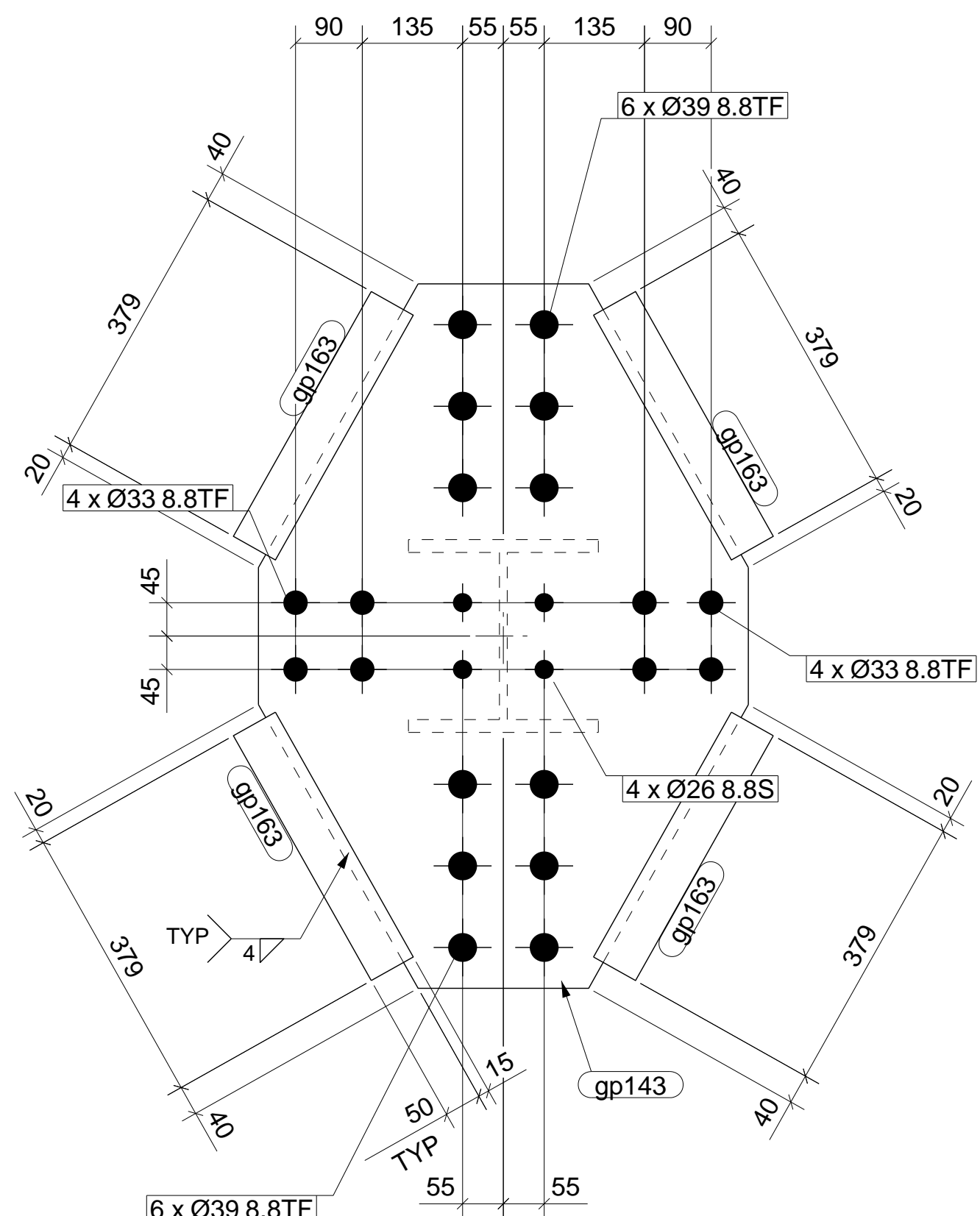
DRAWING No. REV.

4526-2C2

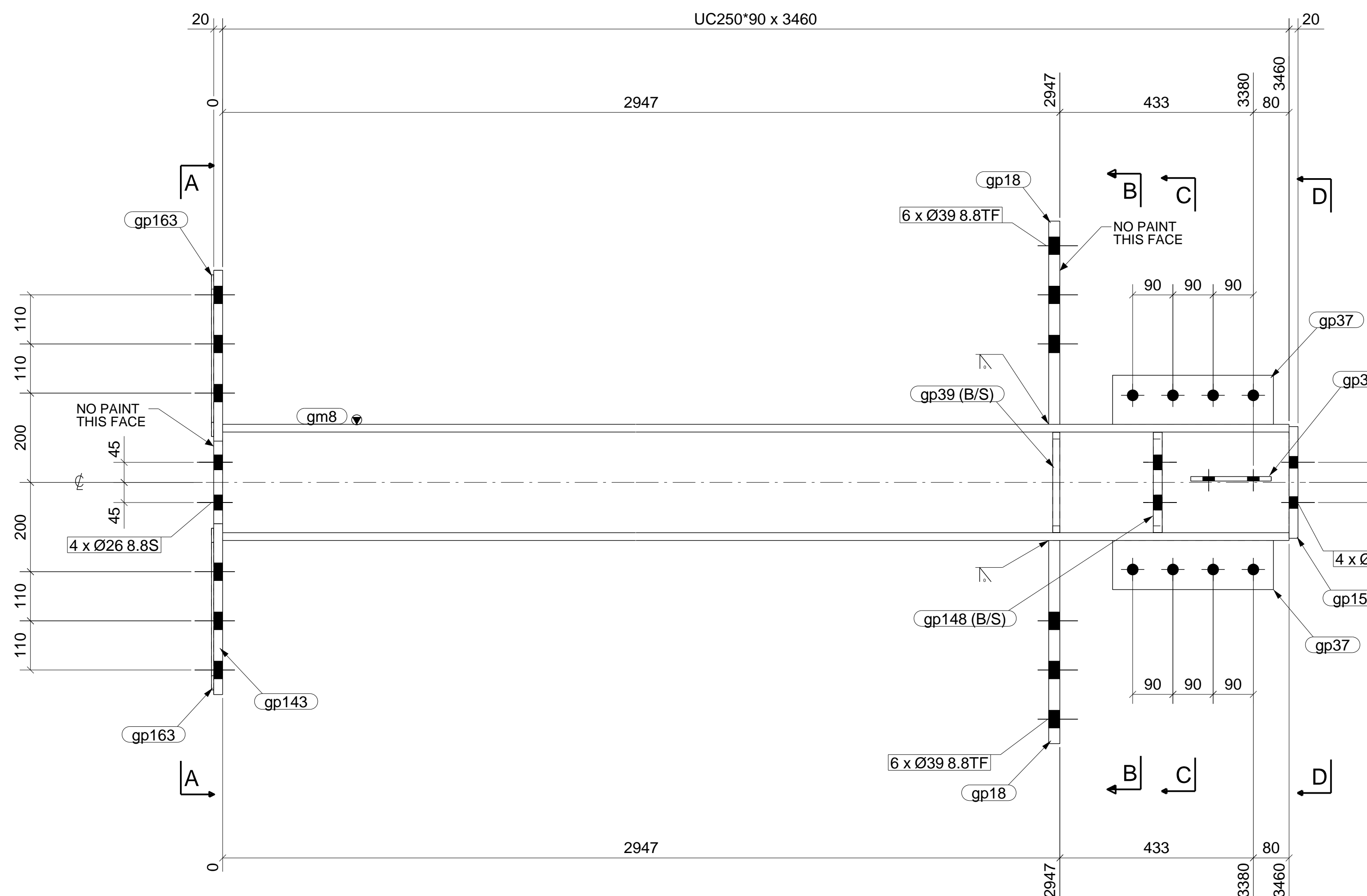
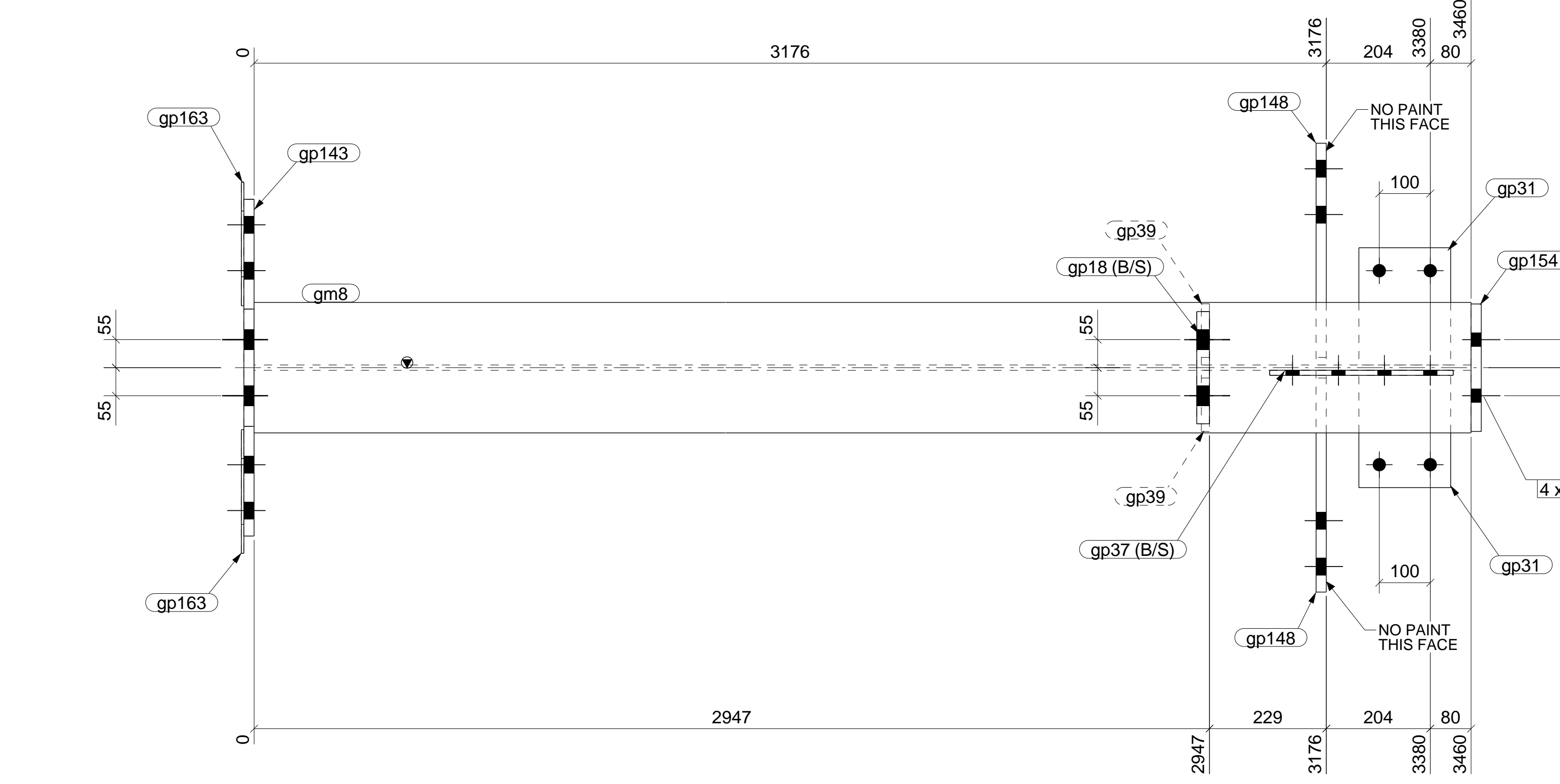
No	REV.	DESCRIPTION	DATE



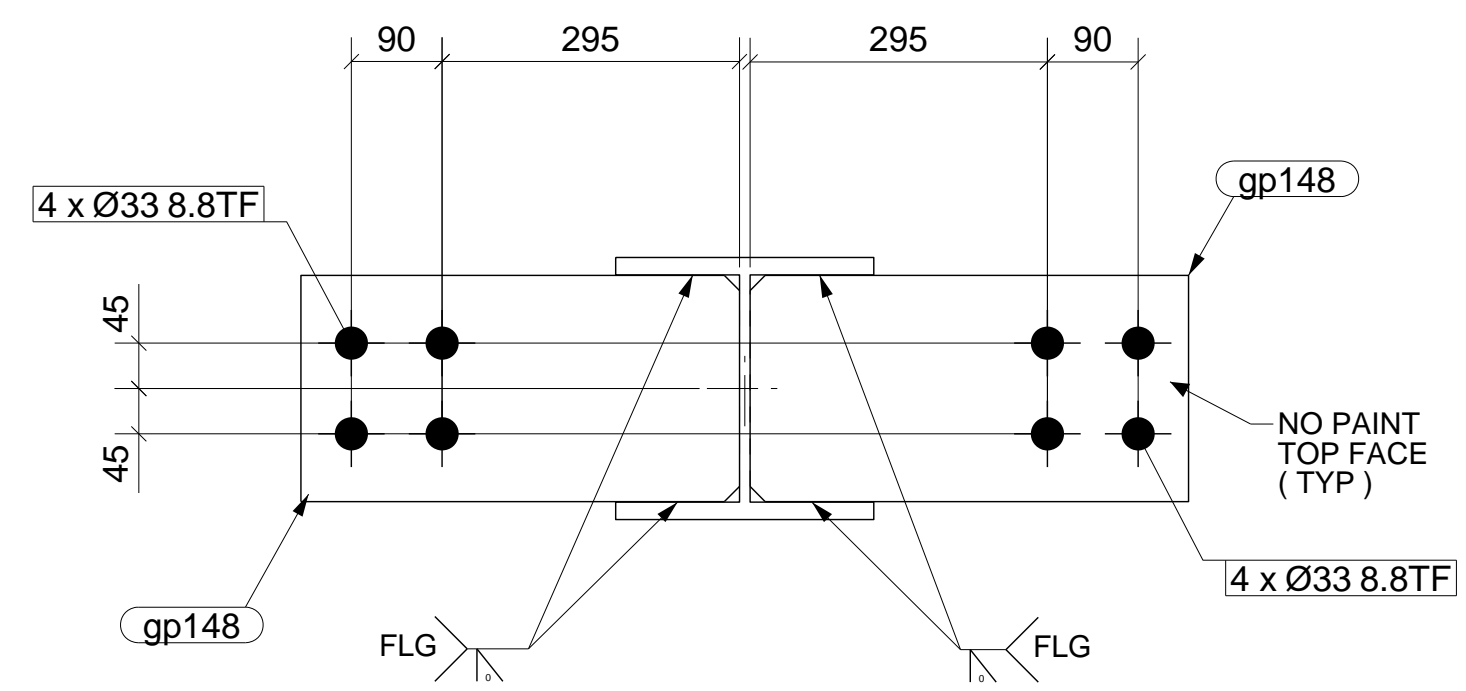
B - B



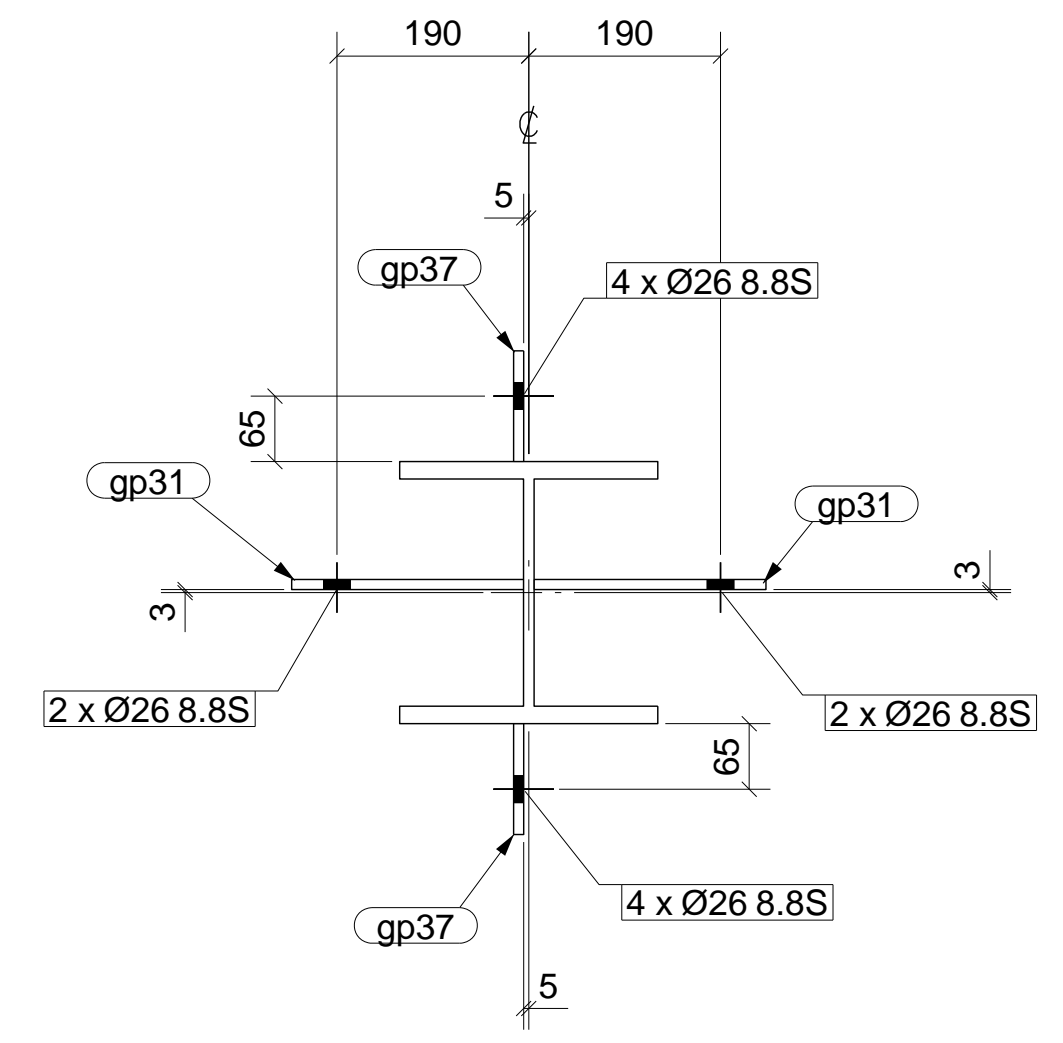
A - A



MATERIAL LIST FOR ONE ASSEMBLY MK'D 6C4				1 Ass. Req'd.		
ITEM	No.	SECTION	GRADE	LENGTH	AREA(m <sup>2</sup> )	WEIGHT(kg)
gm8	1	UC250*90	300PLUS	3460	5.19	309.6
gp18	2	PLT25*220	250	455	0.23	39.3
gp31	2	FLT10*180	250	230	0.09	6.5
gp37	2	FLT10*110	250	360	0.09	6.2
gp39	2	PLT16*120	250	224	0.06	6.7
gp143	1	PLT20*666	250	941	0.98	72.7
gp148	2	PLT20*224	250	435	0.22	30.6
gp154	1	PLT20*250	250	250	0.14	9.8
gp163	4	FLT5*65	250	379	0.05	3.9
				TOTAL	7.06	485.3



C - C



D - D

1 COLUMN (S) REQUIRED MK 6C4

- GENERAL NOTES**
- WELDS 6 CONT. FILLET (CAT. SP) UNLESS NOTED.
  - ALL BUTT WELDS TO BE FULL PENETRATION (CAT. SP) UNLESS NOTED.
  - ALL NOTCHES TO HAVE 11mm RADIUS AT INTERNAL CORNERS.
  - NO PAINT IN WAY OF TF BOLT CONNECTIONS.
  - THIRD ANGLE PROJECTION UNLESS NOTED.
  - ASSEMBLY MARK TO BE STAMPED ON TOP FACE WHERE INDICATED THIS  $\nabla$  N S  $\odot$  F S
  - ALL HOLES Ø22 U.N.O.

PAINT : PRIMER  
PRECAMBER :

ERECTION PLAN REFERENCE:  
4330-MP-03

Xtech Drafting Pty. L td.  
A.B.N. 69 079 793 122  
14/37 - 39 ALBERT RD. MELBOURNE. VIC. AUSTRALIA. 3004  
PH. +61 3 9866 1015 FAX. +61 3 9077 0101

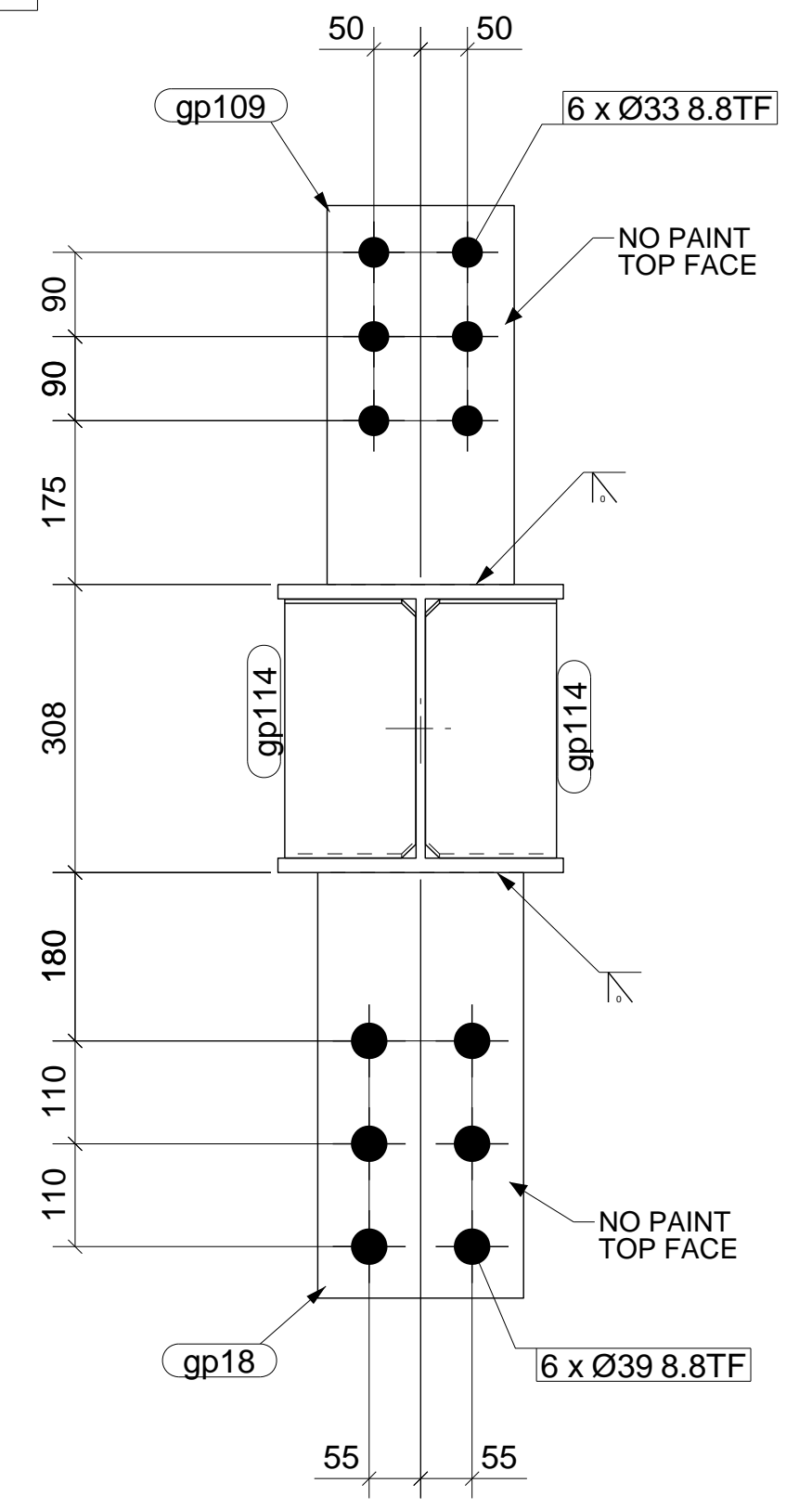
STILCON HOLDINGS PTY. LTD.  
37 Link Crt. Brooklyn Vic. 3025 Ph: 93141611 Fax: 93151559

HACER GROUP PTY. LTD.  
FOOTSCRAY PLAZA REDEVELOPMENT  
LEVEL 6  
COLUMN

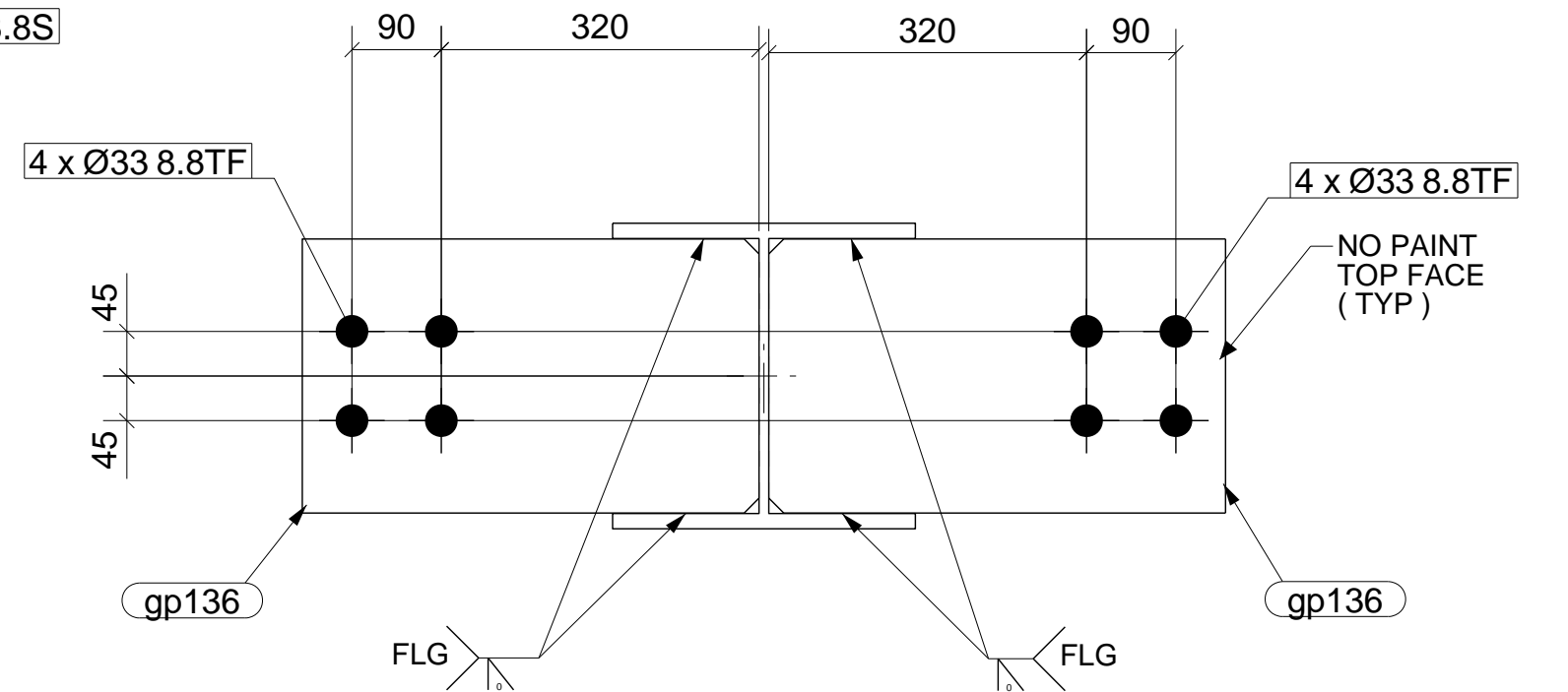
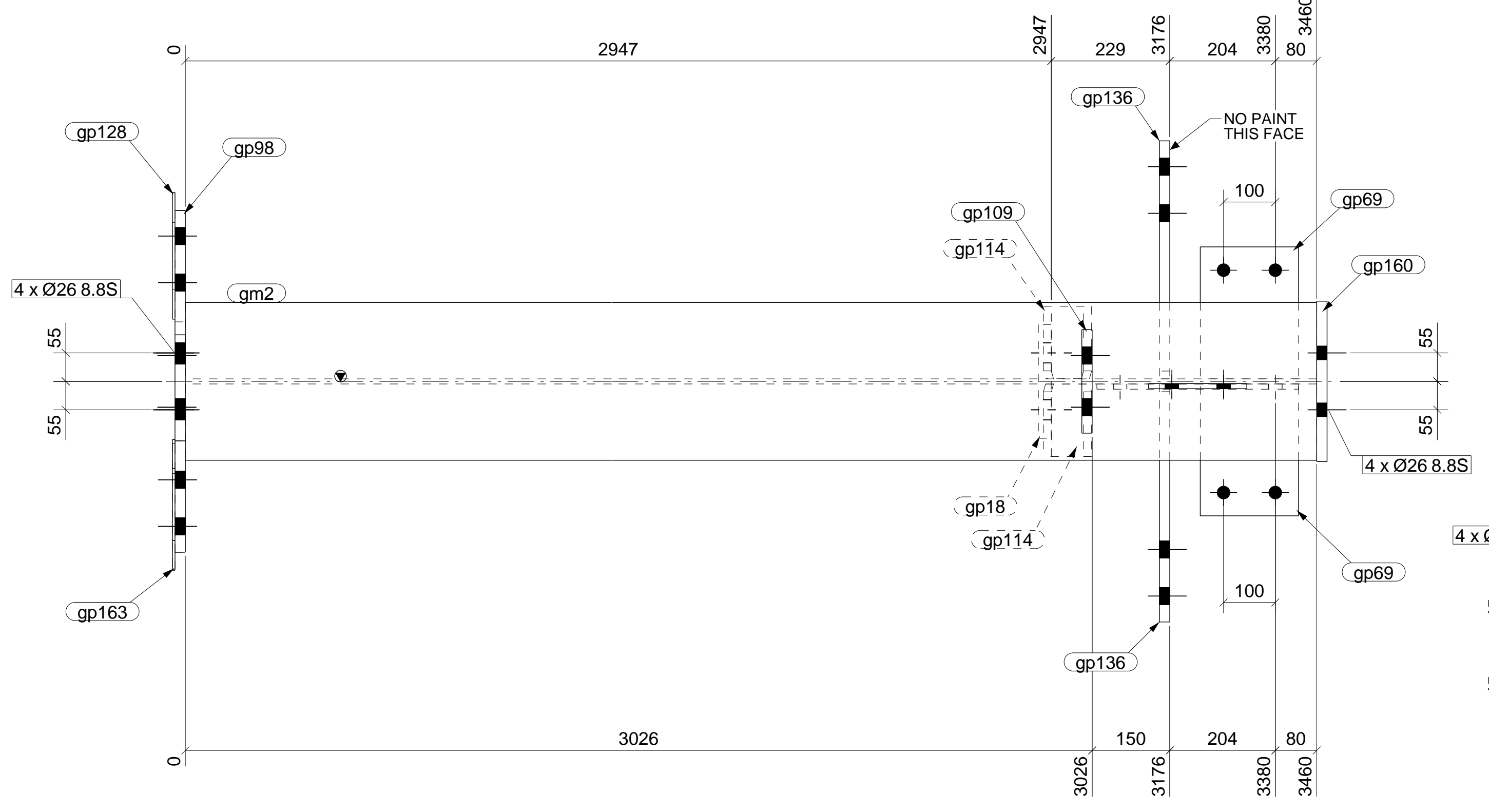
DESIGN ENGINEER:	DRAWN: AWM	CHECKED: XTD	DRAWING No.	REV.
	DATE: 28.06.12	SCALE: 1:7.5	4330-6C4	A

No	REV.	ISSUED FOR APPROVAL DESCRIPTION	DATE
1	A	ISSUED FOR APPROVAL	28.06.12

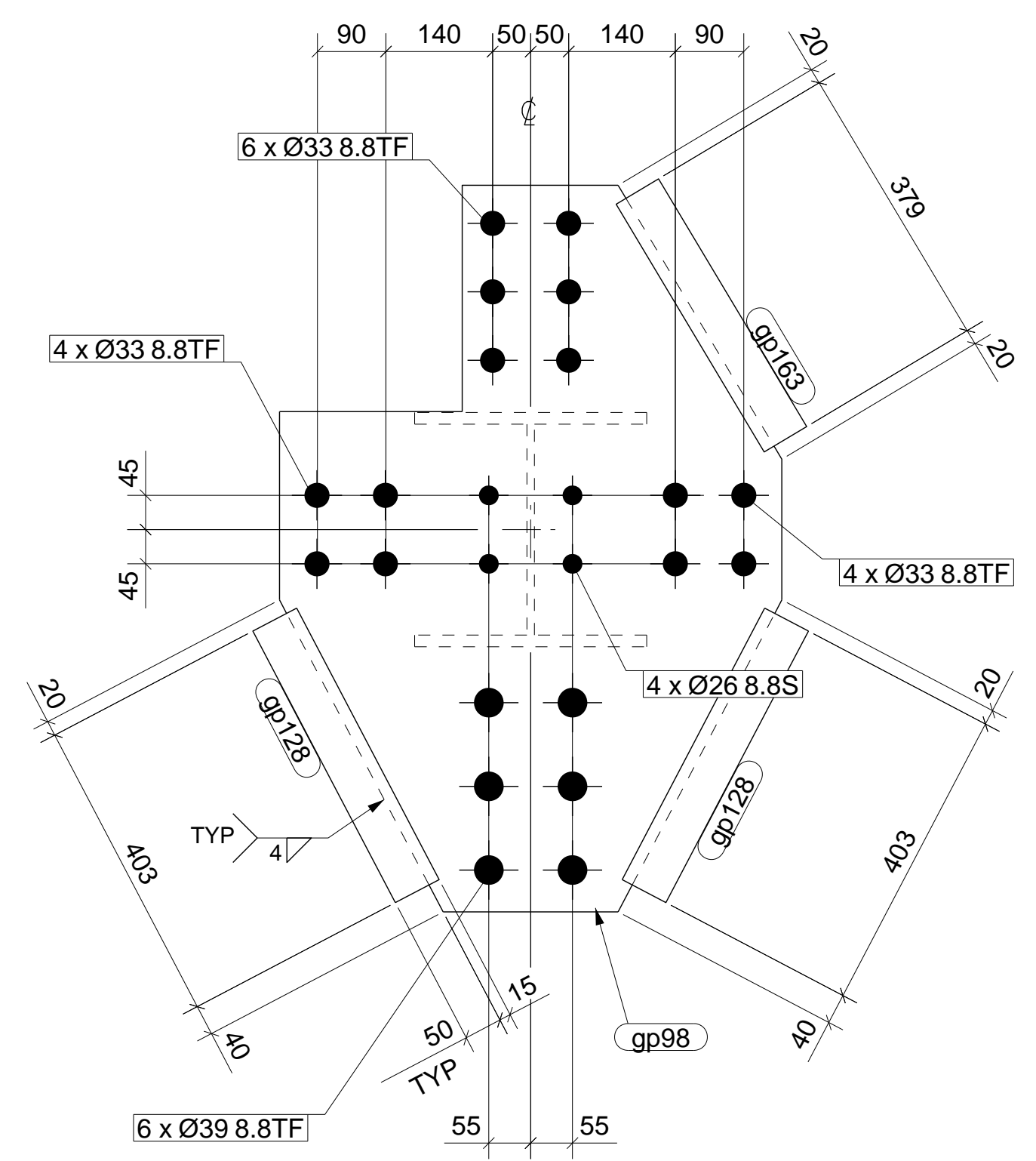
MATERIAL LIST FOR ONE ASSEMBLY MK'D				6C15	1 Ass. Req'd.	
ITEM	No.	SECTION	GRADE	LENGTH	AREA(m <sup>2</sup> )	WEIGHT(kg)
gm2	1	UC310*97	300PLUS	3460	6.19	336.8
gp18	1	PLT25*220	250	455	0.23	19.6
gp35	1	FLT10*110	250	390	0.10	3.4
gp57	1	FLT10*110	250	190	0.05	1.6
gp69	2	PLT10*190	250	255	0.11	7.6
gp98	1	PLT20*661	250	955	0.92	67.9
gp109	1	FLT20*200	250	405	0.19	12.7
gp114	2	PLT16*140	250	283	0.09	9.9
gp128	2	FLT5*65	250	403	0.06	2.1
gp136	2	PLT20*276	250	460	0.28	39.8
gp160	1	PLT20*310	250	310	0.22	15.1
gp163	1	FLT5*65	250	379	0.05	1.0
				TOTAL	8.49	517.5



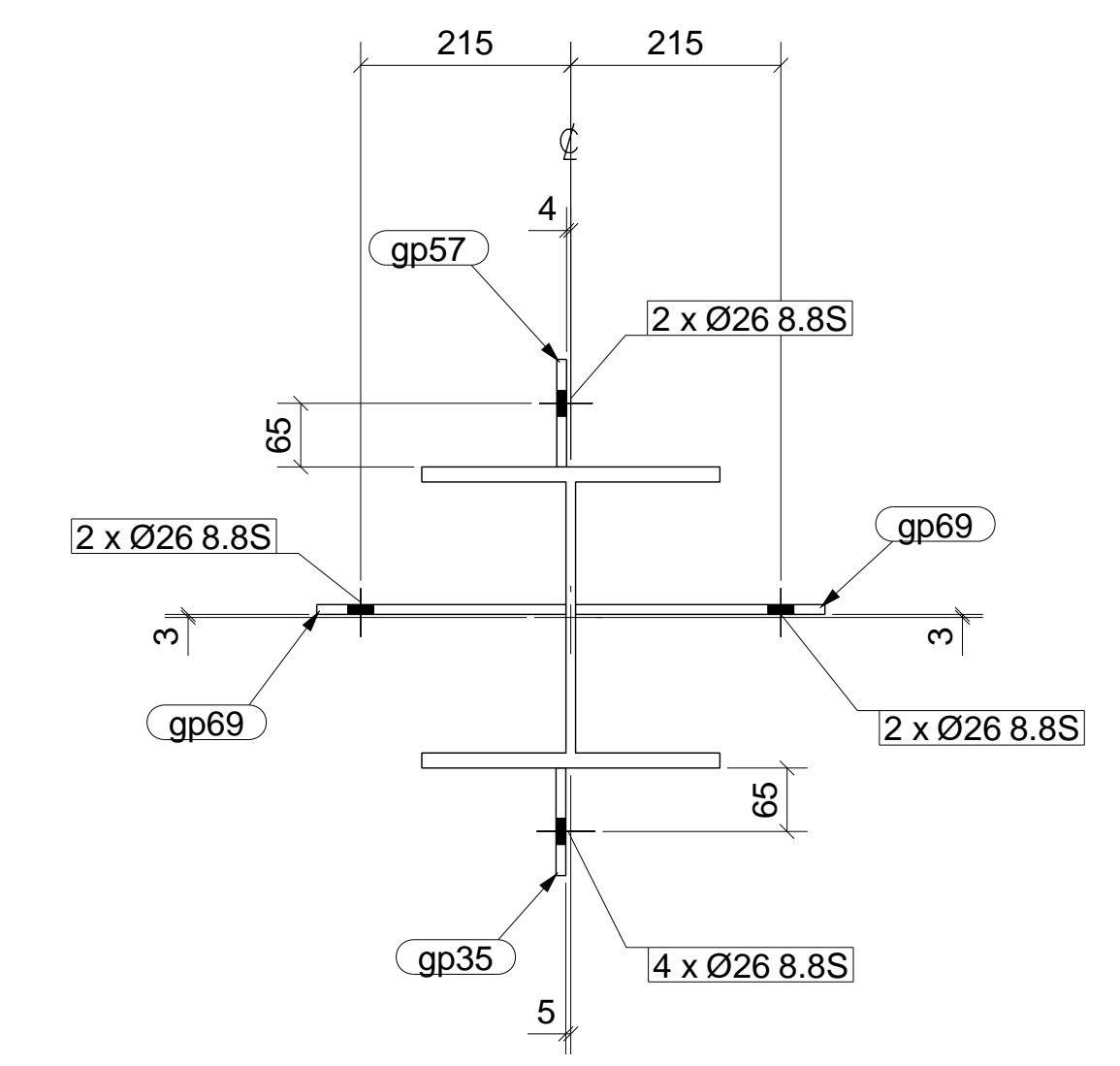
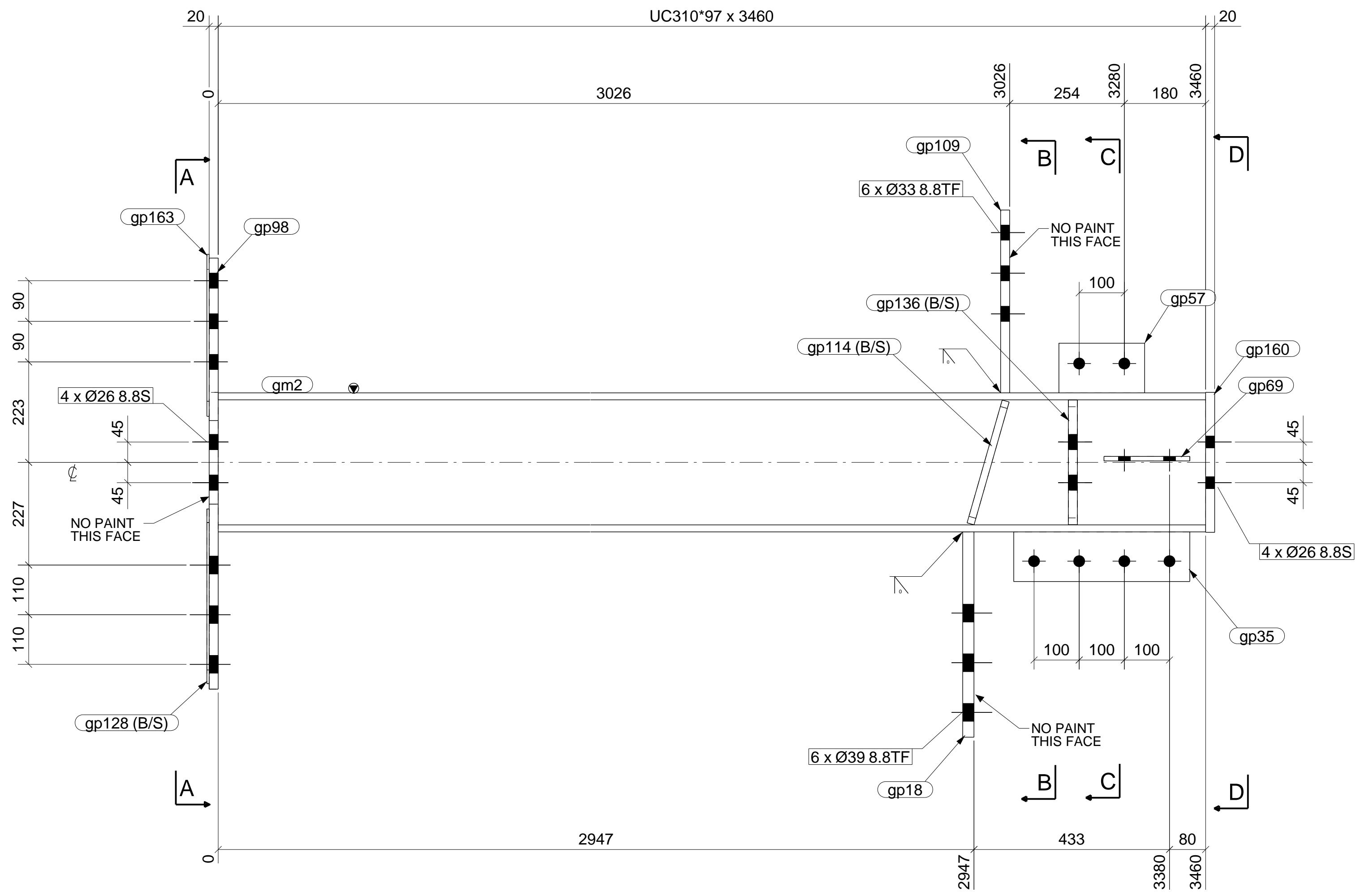
B - B



C - C



A - A



D - D

1 COLUMN (S) REQUIRED MK 6C15

- GENERAL NOTES**
1. WELDS 6 CONT. FILLET (CAT. SP) UNLESS NOTED.
  2. ALL BUTT WELDS TO BE FULL PENETRATION (CAT. SP) UNLESS NOTED.
  3. ALL NOTCHES TO HAVE 11mm RADIUS AT INTERNAL CORNERS.
  4. NO PAINT IN WAY OF TF BOLT CONNECTIONS.
  5. THIRD ANGLE PROJECTION UNLESS NOTED.
  6. ASSEMBLY MARK TO BE STAMPED ON TOP FACE WHERE INDICATED THIS N S F S
  7. ALL HOLES Ø22 U.N.O.

PAINT : PRIMER  
PRECAMBER :

ERECTION PLAN REFERENCE:  
4330-MP-03

**Xtech Drafting Pty. L td.**  
A.B.N. 69 079 793 122  
141/37 - 39 ALBERT RD. MELBOURNE. VIC. AUSTRALIA. 3004  
PH. +61 3 9866 1015 FAX. +61 3 9077 0101

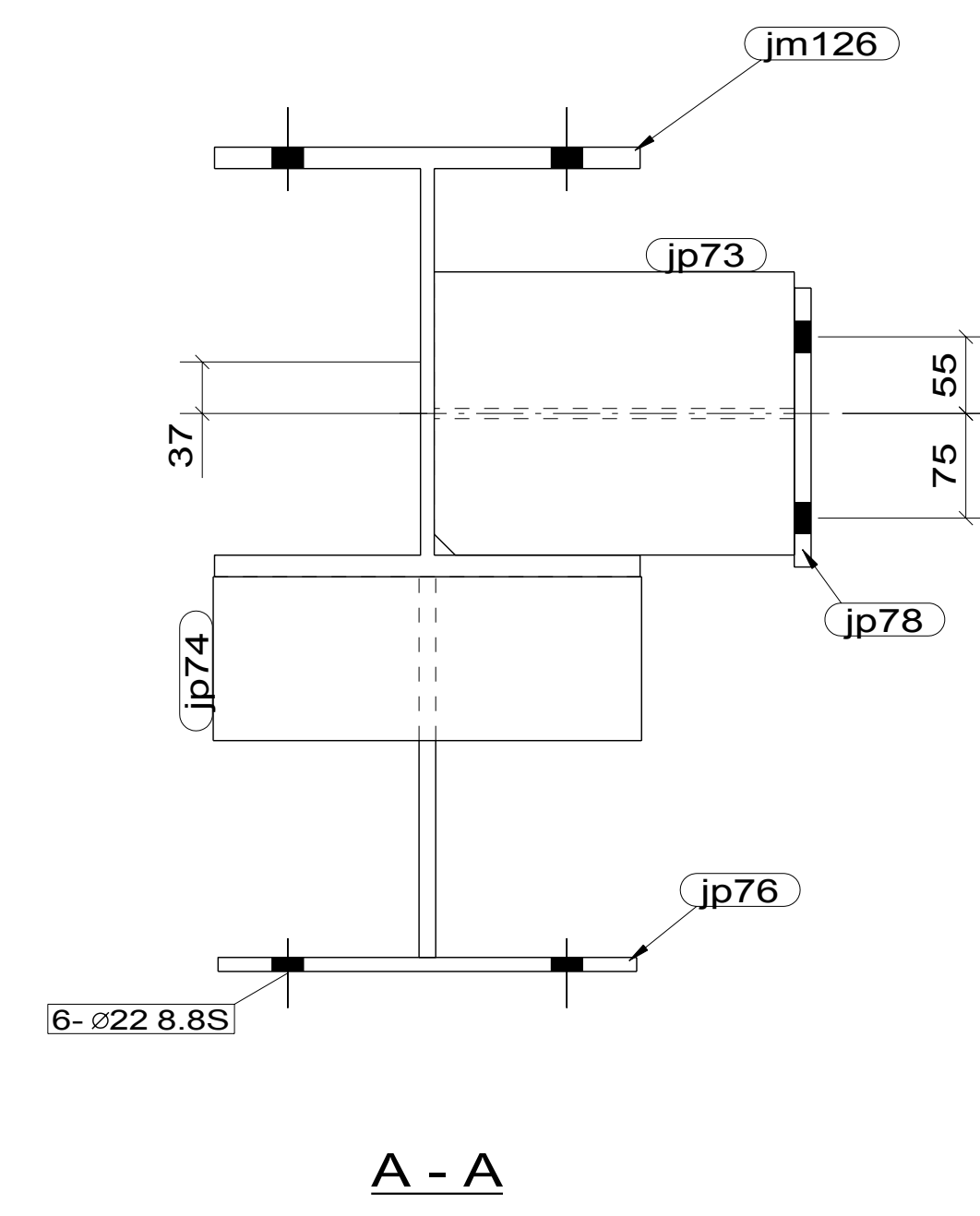
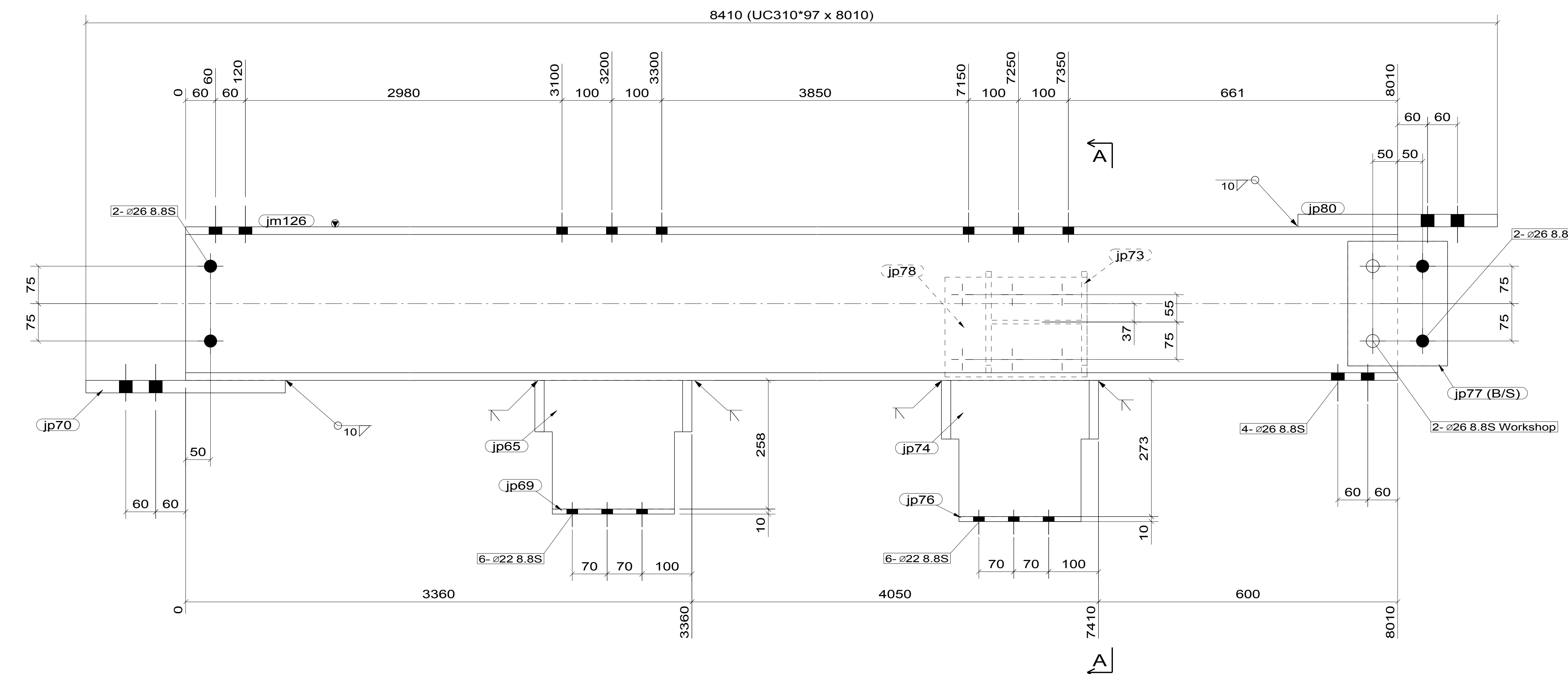
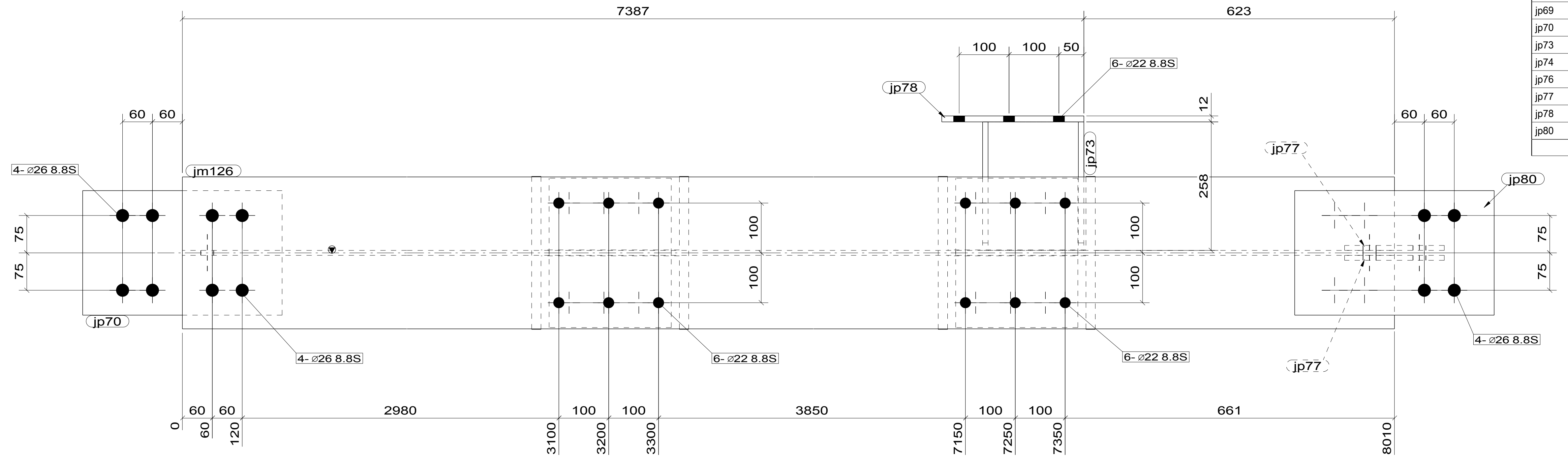
**STILCON HOLDINGS PTY. LTD.**  
37 Link Crt. Brooklyn Vic. 3025 Ph: 93141611 Fax: 93151559

**HACER GROUP PTY. LTD.**  
FOOTSCRAY PLAZA REDEVELOPMENT  
LEVEL 6  
COLUMN

DESIGN ENGINEER:	DRAWN: AWM	CHECKED: XTD	DRAWING No.	REV.
	DATE: 28.06.12	SCALE: 1:7.5	4330-6C15	A

No	REV.	DESCRIPTION	DATE
1	A	ISSUED FOR APPROVAL	28.06.12

MATERIAL LIST FOR ONE ASSEMBLY MK				9C6	1	Ass. Req'd.
ITEM	No.OFF	SECTION	LENGTH	GRADE	WEIGHT(kg)	AREA(m <sup>2</sup> )
jm126	1	UC310*97	8010	300PLUS	779.7	14.3
jp65	1	UC310*118	258	300PLUS	30.4	0.5
jp69	1	PLT10*245	300	300	5.8	0.2
jp70	1	PLT25*250	400	300	19.6	0.2
jp73	1	UC200*46	258	300PLUS	12.0	0.3
jp74	1	UC310*118	273	300PLUS	32.1	0.5
jp76	1	PLT10*245	300	300	5.8	0.2
jp77	2	FLT10*200	250	250	3.9	0.1
jp78	1	FLT12*200	285	250	5.4	0.1
jp80	1	PLT25*250	400	300	19.6	0.2
TOTAL					918.2	16.7



1 COLUMN (S) REQUIRED MK 9C6

**GENERAL NOTES**  
 1. WELDS 6 CONT. FILLET (CAT. SP) UNLESS NOTED.  
 2. ALL BUTT WELDS TO BE FULL PENETRATION (CAT. SP) UNLESS NOTED.  
 3. ALL NOTCHES TO HAVE 11mm RADIUS AT INTERNAL CORNERS.  
 4. NO PAINT IN WAY OF TF BOLT CONNECTIONS.  
 5. THIRD ANGLE PROJECTION UNLESS NOTED.  
 6. ASSEMBLY MARK TO BE STAMPED ON TOP FACE WHERE INDICATED THUS: N.S. F.S.

**PAINT : GALV**  
**PRECAMBER :**

No.	DATE	DETAILS	REVISIONS
A	13.03.08	ISSUED FOR APPROVAL	
0	26.03.08	ISSUED FOR FABRICATION	

**Xtech Drafting Pty. Ltd.**  
 A.B.N. 30 105 598 865  
 14 / 37 - 39 ALBERT RD. MELBOURNE, VIC. AUSTRALIA 3004  
 PH.+61 3 9866 1015 FAX.+61 3 9866 1016 MOB. 0411 566 698  
**STILCON HOLDINGS PTY. LTD.**  
 P.O. Box 263 Altona North Vic 3025 Australia Ph. +61 3 93141611

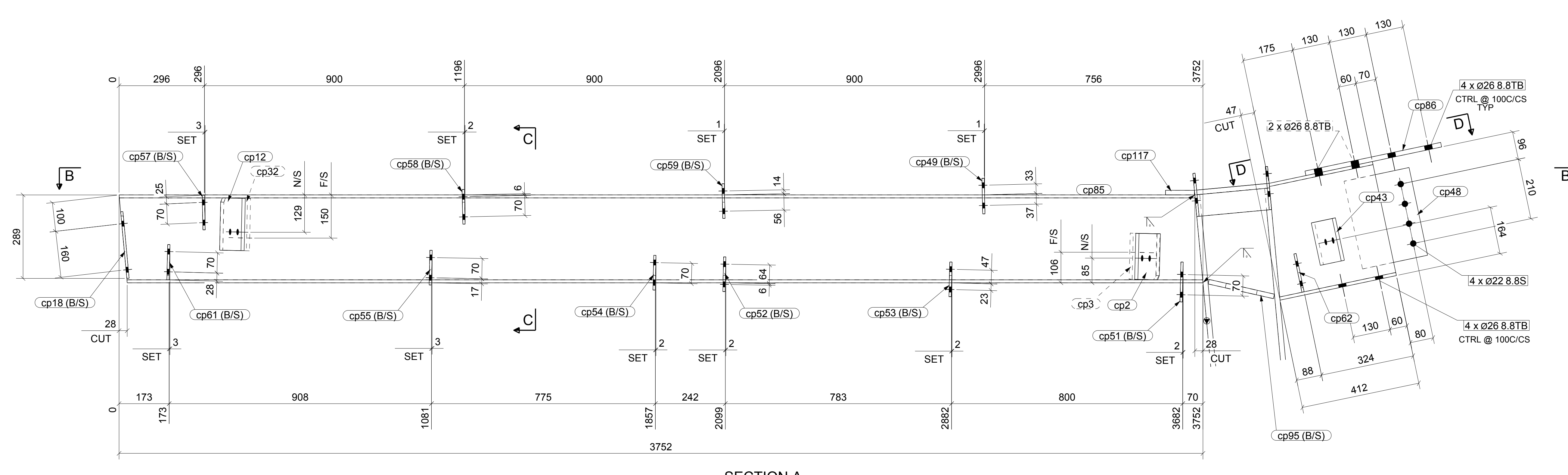
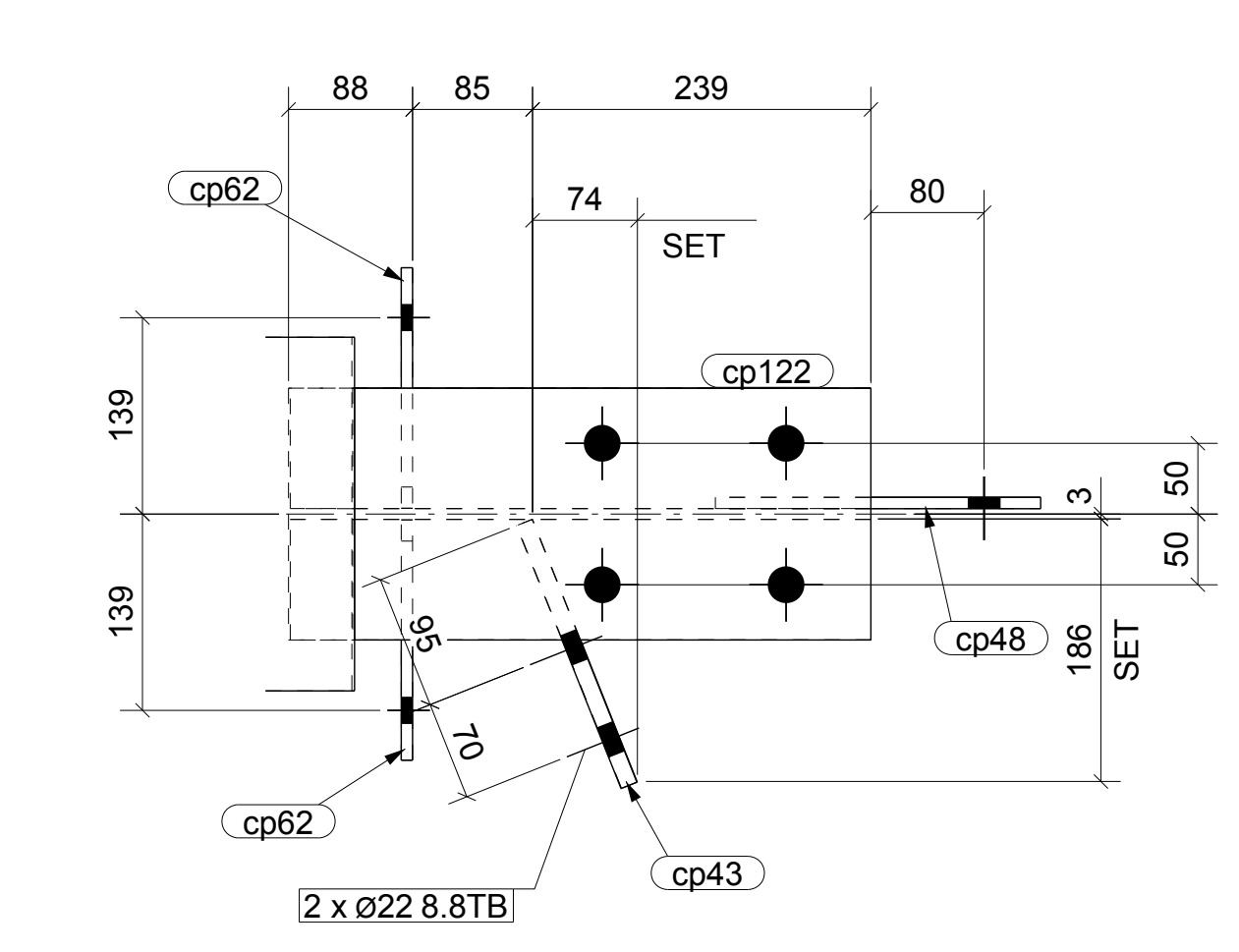
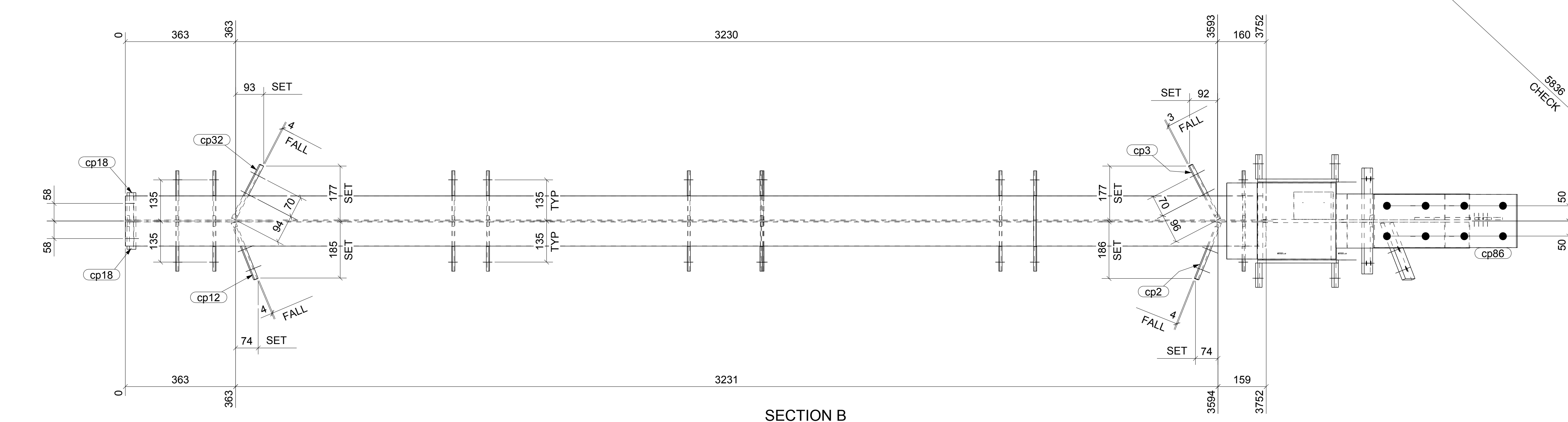
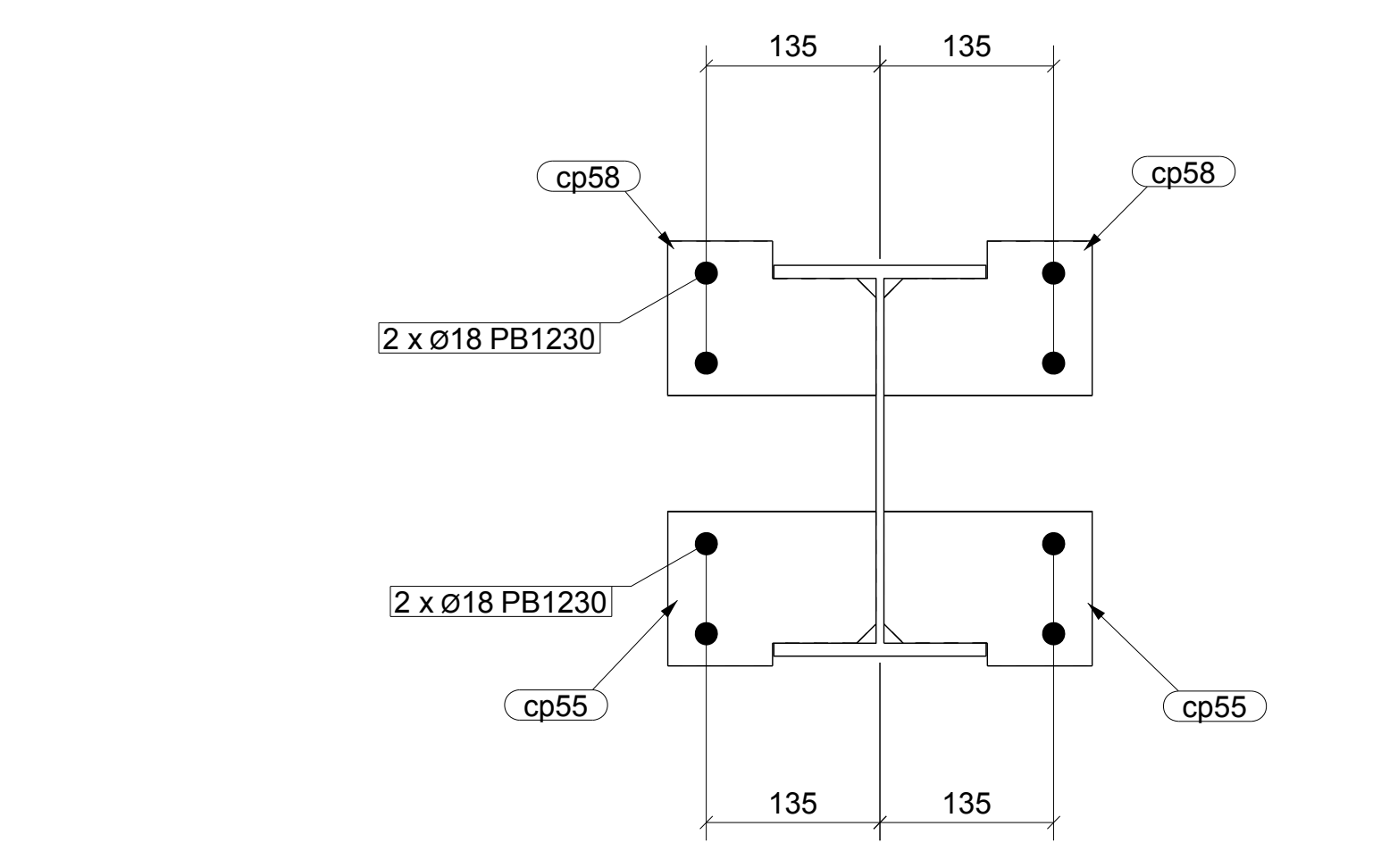
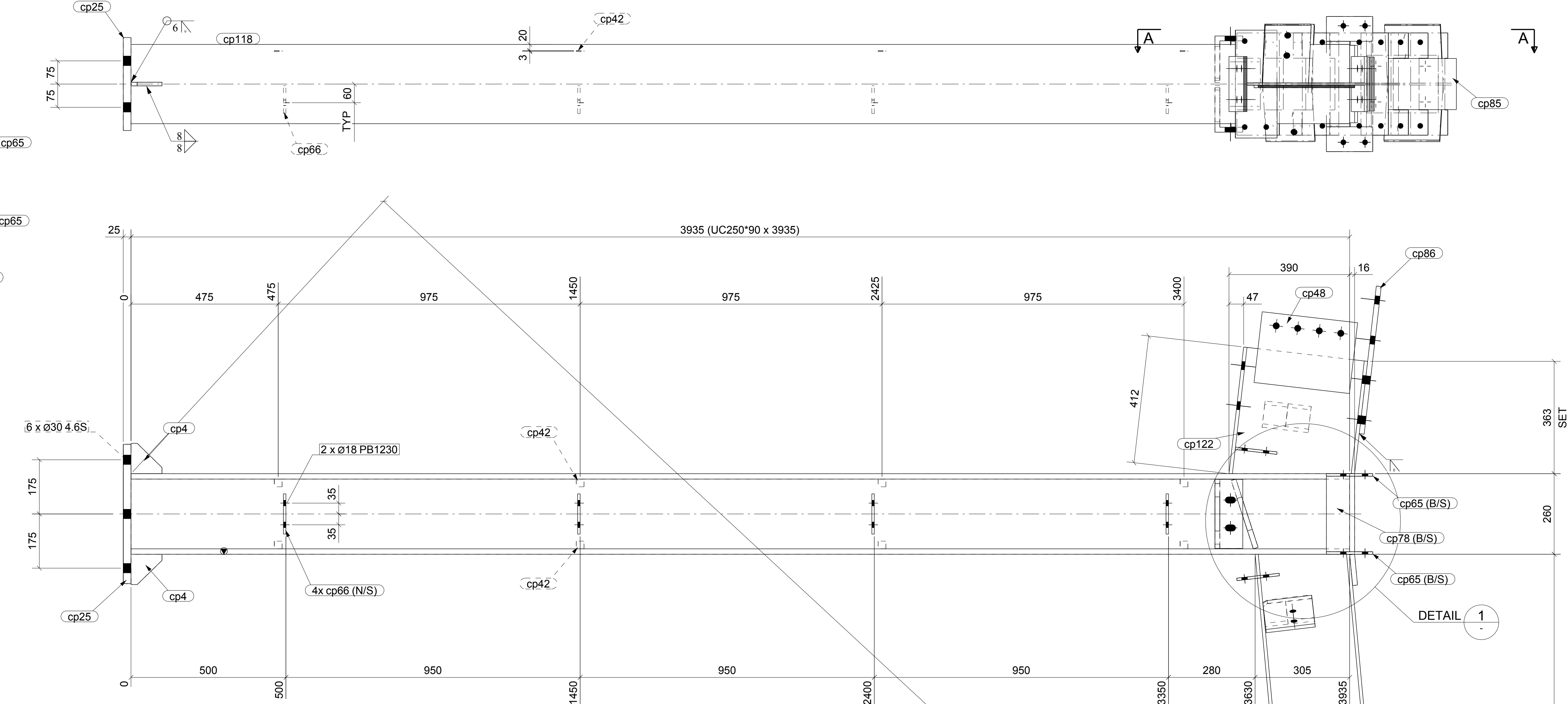
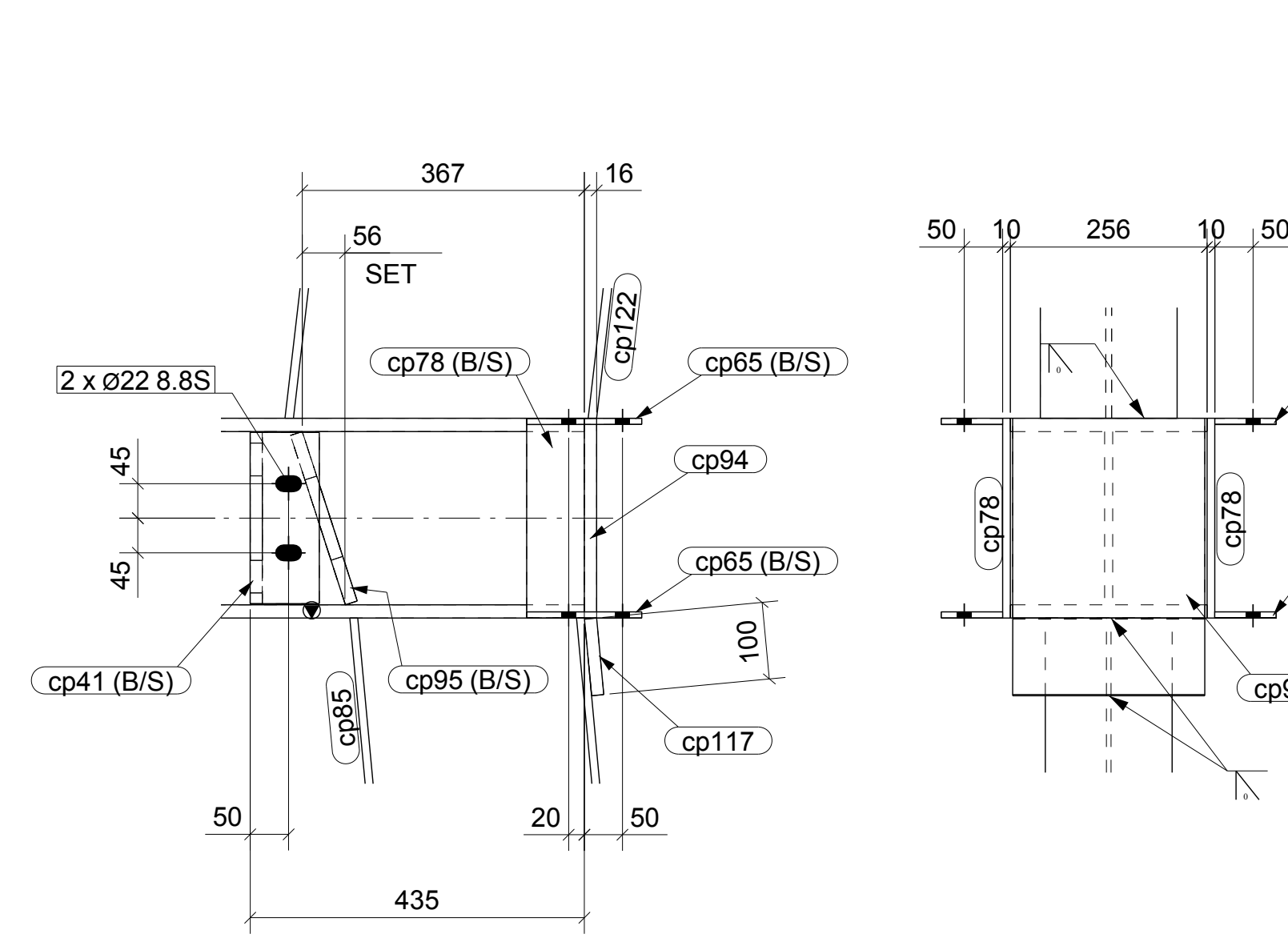
**SALTA CONSTRUCTIONS PTY. LTD.**  
**MERCY REDEVELOPMENT - 150 CLARENDON ST.**  
**LEVEL 9 THRU 11 STEELWORK**  
**COLUMN**

ERECTION PLAN REFERENCE:  
 7849-MP-10, MP-100

DRAWN: AM	CHECKED: AM	DRAWING No.	REV.
DATE: 13.03.2008	SCALE: 1/5	7849-9C6	0



MATERIAL LIST FOR ONE ASSEMBLY MKD						3C8	1 Ass. Req'd.	
ITEM	No.	SECTION	GRADE	LENGTH	AREA(m <sup>2</sup> )	WEIGHT(kg)		
cp2	1	PLT12*159	250	200	0.07	3.0		
cp3	1	PLT12*159	250	200	0.07	3.0		
cp4	2	FLT12*100	250	98	0.02	1.3		
cp12	1	FLT12*200	250	181	0.08	3.4		
cp18	2	FLT8*90	250	231	0.05	2.6		
cp25	1	PLT25*300	350Z	450	0.31	0.0		
cp32	1	FLT12*200	250	181	0.08	3.4		
cp41	2	UA150*90*16	300PLUS	223	0.10	12.4		
cp42	8	FLT3*25	250	25	0.00	0.1		
cp43	1	FLT12*150	250	200	0.07	2.8		
cp48	1	PLT8*230	250	310	0.15	4.5		
cp49	1	PLT8*123	250	330	0.07	1.9		
cp51	2	PLT8*138	250	162	0.04	2.0		
cp52	2	PLT8*120	250	162	0.04	2.0		
cp53	2	PLT8*120	250	162	0.03	1.8		
cp54	2	PLT8*120	250	162	0.04	2.1		
cp55	2	PLT8*120	250	162	0.04	2.2		
cp57	2	PLT8*120	250	162	0.04	2.3		
cp58	2	PLT8*120	250	162	0.04	2.1		
cp59	2	PLT8*120	250	162	0.04	1.9		
cp61	2	PLT8*122	250	162	0.04	2.5		
cp62	2	PLT8*135	250	170	0.05	2.9		
cp65	4	PLT8*80	250	150	0.03	3.0		
cp66	4	FLT8*90	250	130	0.03	2.9		
cp78	2	FLT10*75	250	260	0.05	3.1		
cp85	1	UB310*40	300PLUS	3752	4.65	153.5		
cp86	1	PLT16*175	250	480	0.19	10.6		
cp94	1	PLT16*250	250	260	0.15	8.2		
cp95	2	PLT16*133	250	232	0.06	5.4		
cp117	1	FLT16*100	250	250	0.06	3.1		
cp118	1	UC250*90	300PLUS	3935	5.90	352.2		
cp122	1	UB410*54	300PLUS	412	0.61	22.3		
						TOTAL	13.19	624.4



1 COLUMN (S) REQUIRED MK 3C8

GENERAL NOTES

1. WELDS 6 CONT. FILLET (CAT. SP) UNLESS NOTED.
2. ALL BUTT WELDS TO BE FULL PENETRATION (CAT. SP) UNLESS NOTED.
3. ALL NOTCHES TO HAVE 11mm RADIUS AT INTERNAL CORNERS.
4. NO PAINT IN WAY OF TF BOLT CONNECTIONS.
5. THIRD ANGLE PROJECTION UNLESS NOTED.
6. ASSEMBLY MARK TO BE STAMPED ON TOP FACE WHERE INDICATED THIS WAY N/S F/S
7. ALL HOLES Ø22 UNDO.

PAINT : 0  
PRECAMBER :

ERECTION PLAN REFERENCE:  
SMR-MP-20

**Ketch Drafting Pty. Ltd.**

A.B.N. 69 079 793 122  
14 / 37 - 39 ALBERT RD MELBOURNE, VIC AUSTRALIA 3004  
PH +61 3 9666 1015 FAX +61 3 9666 1016 MOB 0411 566 698

**JOHN HOLLAND PTY. LTD.**  
415 Johnston St. Abbotsford, 3067.

**SOUTH MORANG RAIL EXTENSION PROJECT  
THOMASTOWN STATION  
DOWN PLATFORM STEEL  
PLATFORM COLUMN**

2	0	ISSUED FOR FABRICATION	6.07.11
1	A	ISSUED FOR APPROVAL	22.06.11
No.	REV.	DESCRIPTION	DATE

DESIGN ENGINEER:

DRAWN: DN	CHECKED: XTD	DRAWING No. THO-3C8	REV. 0
DATE: 6.07.11	SCALE: 1:5		