

LEVEL 3 - GRATING PLAN



ERECTION NOTES

- INDICATES MARKED END OF MEMBER. MEMBERS TO BE ERECTED WITH ASSEMBLY MARK AT THIS LOCATION.
- COLUMNS HAVE ASSEMBLY MARK STAMPED ON NORTH OR EAST FACING FLANGE NEAR BASE OF SHAFT U.N.O.
- VERTICAL BRACING, STAIRS, HANGERS, AND OTHER INCLINED MEMBERS HAVE ASSEMBLY MARK STAMPED ON TOP END. MARKS WITH ASTERISK\* ARE STAMPED ON BOTTOM END.
- FIN PLATES FOR CHANNELS ARE ON HEEL UNLESS SHOWN OTHERWISE.
- FIN PLATES FOR BEAMS WILL BE ON NORTH OR WEST SIDE OF BEAM WEB, UNLESS SHOWN OTHERWISE, i.e. ERECT BEAMS TO SOUTH OR EAST SIDE OF CLEAT.

ERECTION PLAN REFERENCE:  
4526-MP-15 & 16

No	REV.	DESCRIPTION	DATE
1	A	ISSUED FOR APPROVAL	27.02.12

Xtech Drafting Pty. L td.

A.B.N. 69 079 793 122  
14/37 - 39 ALBERT RD. MELBOURNE. VIC. AUSTRALIA. 3004  
PH. +61 3 9866 1015 FAX. +61 3 9866 1016 MOB. 0411 566 698

DESIGN ENGINEER:

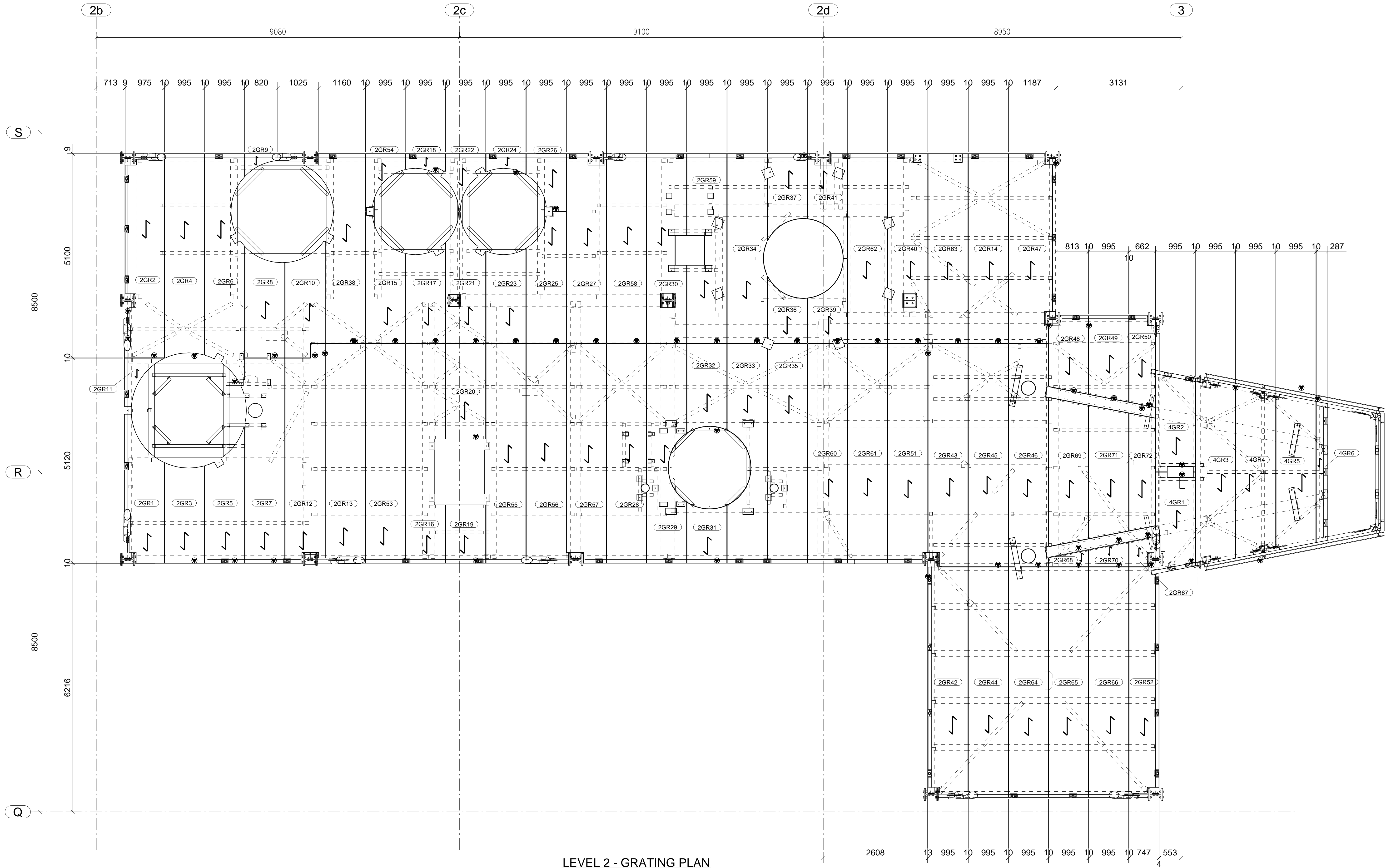
BORAL PLASTERBOARD  
COMPOUND BATCHING PLANT  
LEVEL 3 - GRATING  
PLAN

DRAWN: AWM  
DATE: 27.02.12

CHECKED: XTD  
SCALE: 1:45

DRAWING No.  
4526-MP-17

REV.  
A



LEVEL 2 - GRATING PLAN



**ERECTION NOTES**

1. INDICATES MARKED END OF MEMBER. MEMBERS TO BE ERECTED WITH ASSEMBLY MARK AT THIS LOCATION.
2. COLUMNS HAVE ASSEMBLY MARK STAMPED ON NORTH OR EAST FACING FLANGE NEAR BASE OF SHAFT U.N.O.
3. VERTICAL BRACING, STAIRS, HANGERS, AND OTHER INCLINED MEMBERS HAVE ASSEMBLY MARK STAMPED ON TOP END. MARKS WITH ASTERISK\* ARE STAMPED ON BOTTOM END.
4. FIN PLATES FOR CHANNELS ARE ON HEEL UNLESS SHOWN OTHERWISE.
5. FIN PLATES FOR BEAMS WILL BE ON NORTH OR WEST SIDE OF BEAM WEB, UNLESS SHOWN OTHERWISE, i.e. ERECT BEAMS TO SOUTH OR EAST SIDE OF CLEAT.

ERECTION PLAN REFERENCE:  
4526-MP-9 & 10

**TYPICAL DETAIL**

No	REV.	DESCRIPTION	DATE

**Xtech Drafting Pty. L td.**

A.B.N. 69 079 793 122  
14/37 - 39 ALBERT RD. MELBOURNE, VIC. AUSTRALIA. 3004  
PH. +61 3 9866 1015 FAX. +61 3 9866 1016 MOB. 0411 566 698

DESIGN ENGINEER:

**BORAL PLASTERBOARD  
COMPOUND BATCHING PLANT  
LEVEL 2 - GRATING  
PLAN**

DRAWN: AWM

CHECKED: XTD

DRAWING No.

4526-MP-11

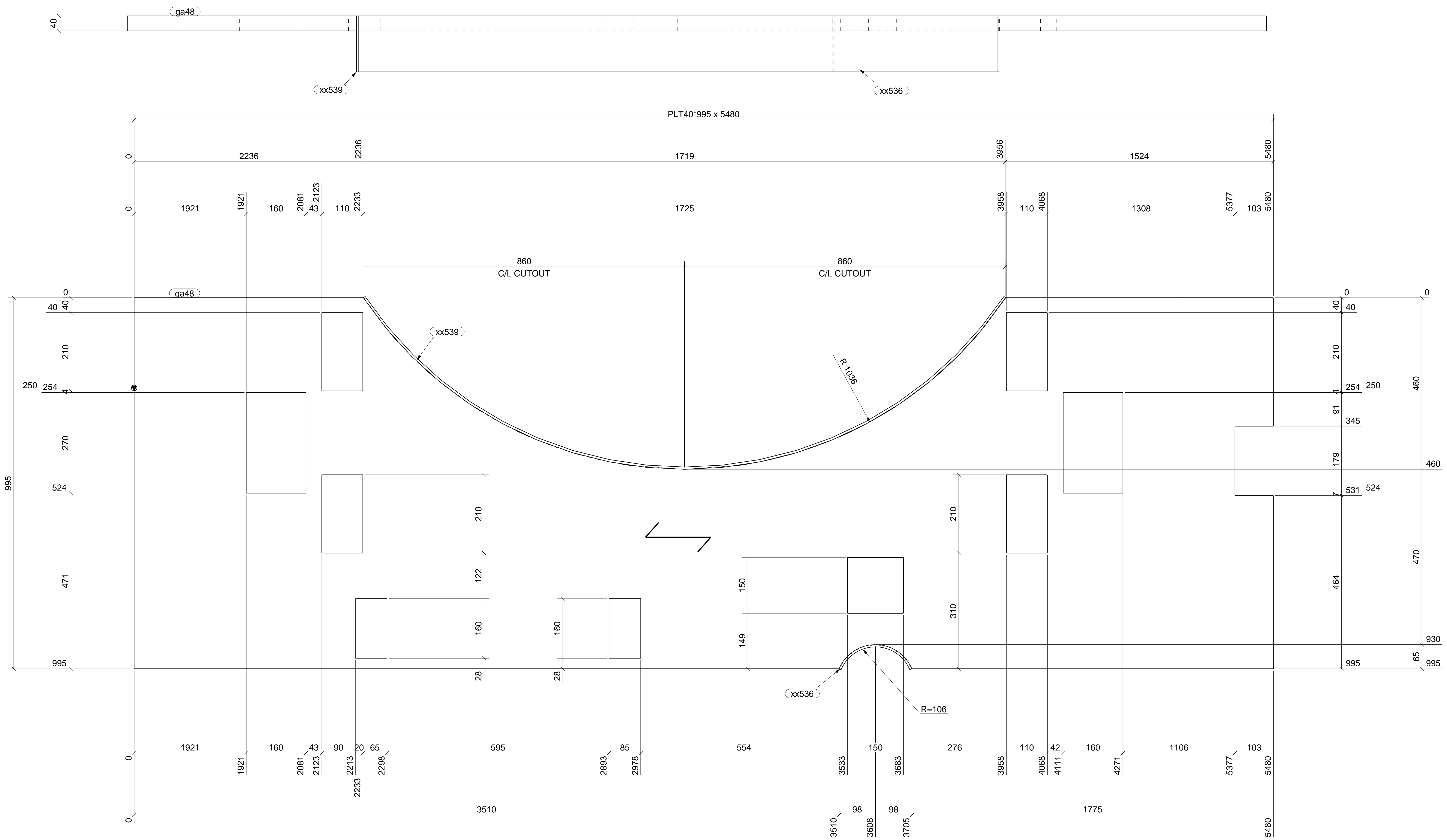
DATE:

SCALE: 1:45

REV.

Telsa Structures

MATERIAL LIST FOR ONE ASSEMBLY MK'D				2GR29		1 Ass. Req'd.
ITEM	No.	SECTION	GRADE	LENGTH	AREA(m <sup>2</sup> )	WEIGHT(kg)
ga48	1	PLT40*995	A405MP*	5480	10.06	254.4
xx536	1	FLT6*150	250	241	0.08	1.7
xx539	1	FLT6*150	250	2027	0.63	14.3
				TOTAL	10.77	270.4



1 GRATING (S) REQUIRED MK 2GR29

- GENERAL NOTES**
1. WELDS 6 CONT. FILLET (CAT. SP) UNLESS NOTED.
  2. ALL BUTT WELDS TO BE FULL PENETRATION (CAT. SP) UNLESS NOTED.
  3. ALL NOTCHES TO HAVE 11mm RADIUS AT INTERNAL CORNERS.
  4. NO PAINT IN WAY OF TF BOLT CONNECTIONS.
  5. THIRD ANGLE PROJECTION UNLESS NOTED.
  6. ASSEMBLY MARK TO BE STAMPED ON TOP FACE WHERE INDICATED THUS N S F S
  7. ALL HOLES Ø22 U.N.O.

PAINT : GALV  
PRECAMBER :

ERECTION PLAN REFERENCE:  
4526-MP-11

**Xtech Drafting Pty. L td.**  
A.B.N. 69 079 793 122  
14/ 37 - 39 ALBERT RD. MELBOURNE. VIC. AUSTRALIA. 3004  
PH. +61 3 9866 1015 FAX. +61 3 9866 1016 MOB. 0411 566 698

**BORAL PLASTERBOARD  
COMPOUND BATCHING PLANT  
LEVEL 2  
GRATING**

DESIGN ENGINEER:

DRAWN: AWM

CHECKED: XTD

DRAWING No. REV.

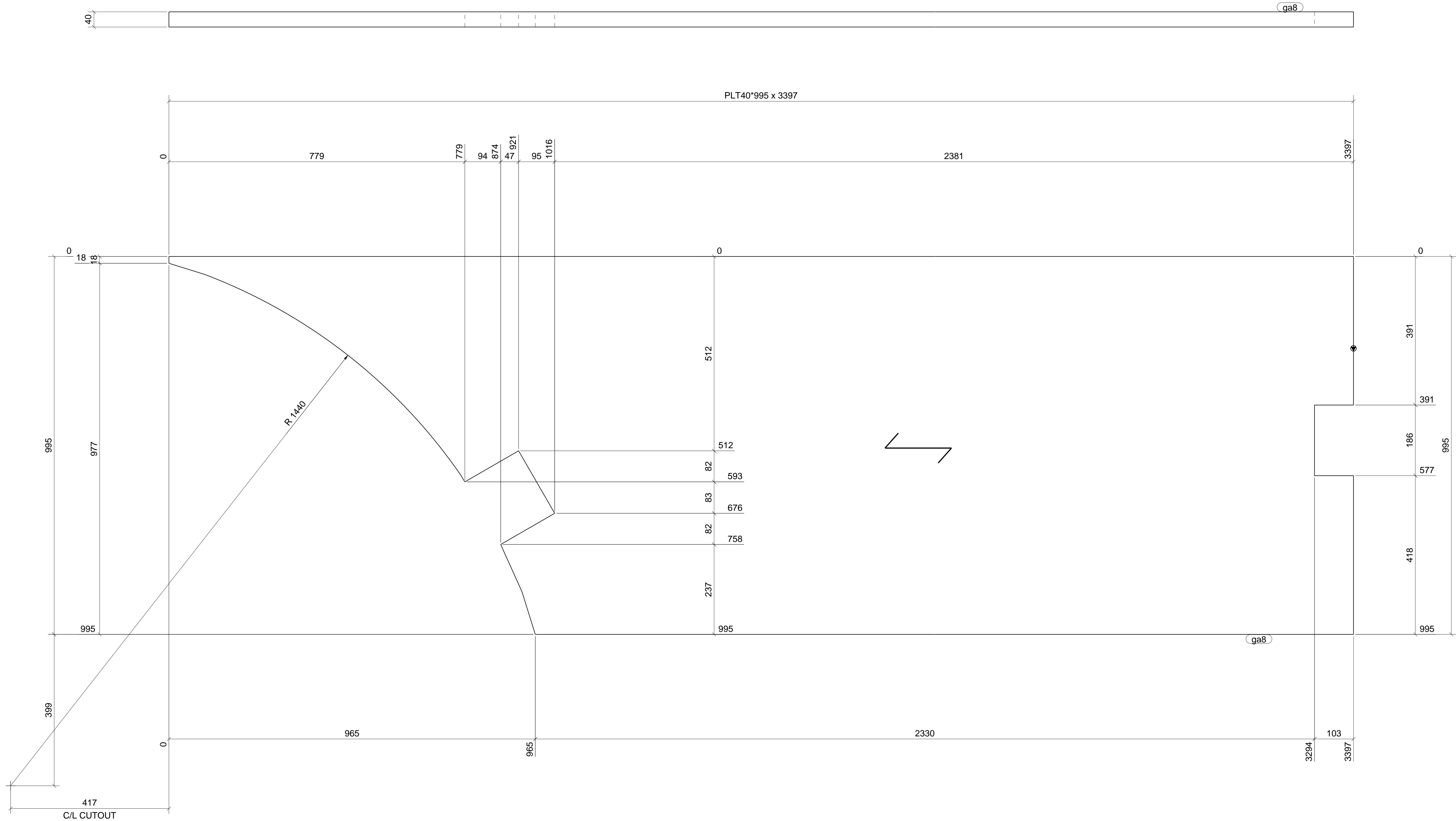
DATE:

SCALE: 1:5

4526-2GR29

No	REV.	DESCRIPTION	DATE

MATERIAL LIST FOR ONE ASSEMBLY MK'D				2GR5	1 Ass. Req'd.	
ITEM	No.	SECTION	GRADE	LENGTH	AREA(m <sup>2</sup> )	WEIGHT(kg)
ga8	1	PLT40*995	A405MP*	3397	5.74	147.8
TOTAL					5.74	147.8



1 GRATING (S) REQUIRED MK 2GR5

GENERAL NOTES

1. WELDS 6 CONT. FILLET (CAT. SP) UNLESS NOTED.
2. ALL BUTT WELDS TO BE FULL PENETRATION (CAT. SP) UNLESS NOTED.
3. ALL NOTCHES TO HAVE 11mm RADIUS AT INTERNAL CORNERS.
4. NO PAINT IN WAY OF TF BOLT CONNECTIONS.
5. THIRD ANGLE PROJECTION UNLESS NOTED.
6. ASSEMBLY MARK TO BE STAMPED ON TOP FACE WHERE INDICATED THUS N S F.S
7. ALL HOLES Ø22 U.N.O.

PAINT : GALV  
PRECAMBER :

ERECTION PLAN REFERENCE:  
4526-MP-11

Xtech Drafting Pty. L td.

A.B.N. 69 079 793 122  
14 / 37 - 39 ALBERT RD. MELBOURNE. VIC. AUSTRALIA. 3004  
PH. +61 3 9866 1015 FAX. +61 3 9866 1016 MOB. 0411 566 698

DESIGN ENGINEER:

BORAL PLASTERBOARD  
COMPOUND BATCHING PLANT  
LEVEL 2  
GRATING

DRAWN: AWM

CHECKED: XTD

DRAWING No.

REV.

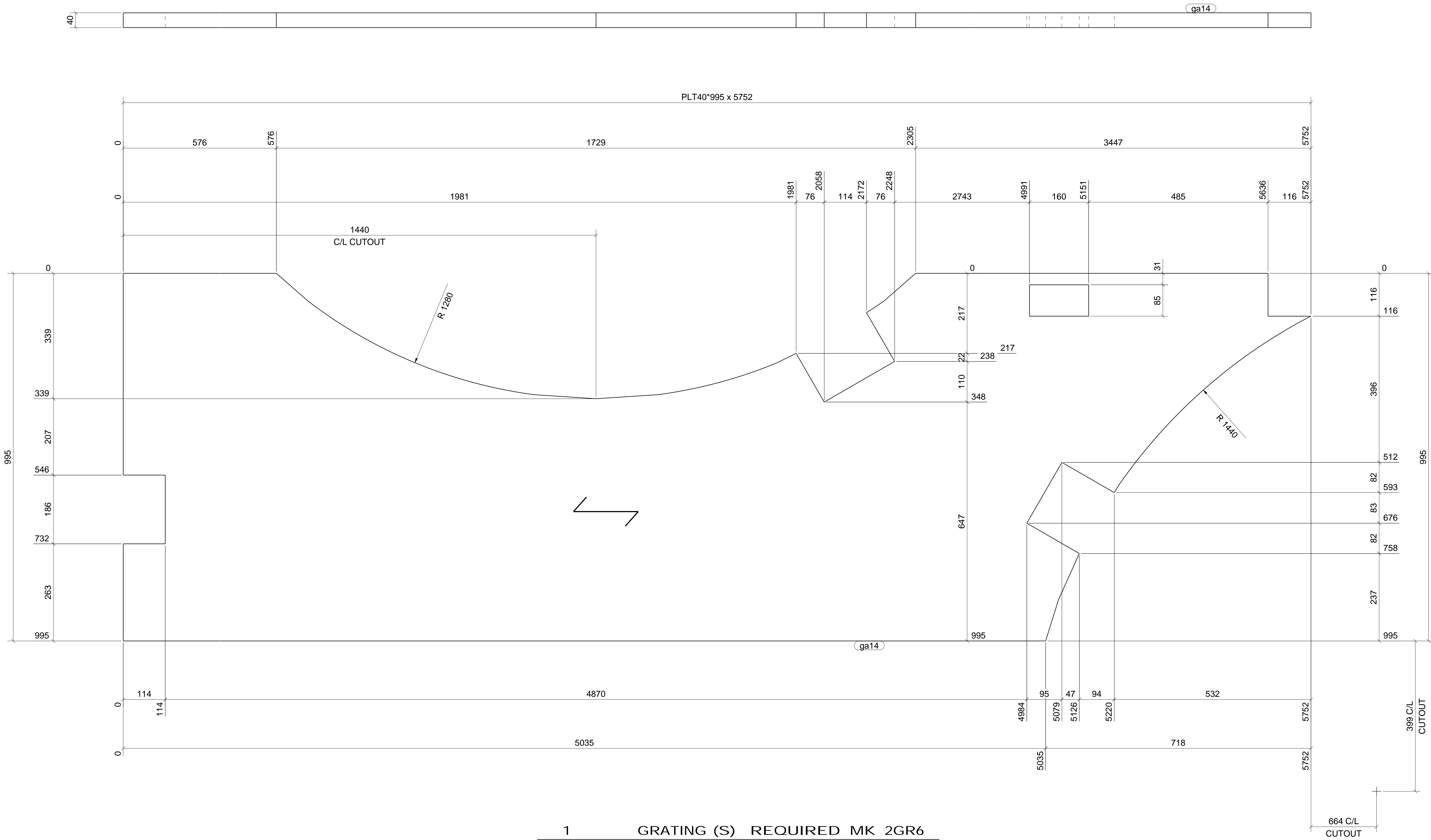
DATE:

SCALE: 1:5

4526-2GR5

No	REV.	DESCRIPTION	DATE

MATERIAL LIST FOR ONE ASSEMBLY MK'D				2GR6	1 Ass. Req'd.	
ITEM	No.	SECTION	GRADE	LENGTH	AREA(m <sup>2</sup> )	WEIGHT(kg)
ga14	1	PLT40*995	A405MP*	5752	10.20	263.4
TOTAL					10.20	263.4



- GENERAL NOTES**
1. WELDS 6 CONT. FILLET (CAT. SP) UNLESS NOTED.
  2. ALL BUTT WELDS TO BE FULL PENETRATION (CAT. SP) UNLESS NOTED.
  3. ALL NOTCHES TO HAVE 11mm RADIUS AT INTERNAL CORNERS.
  4. NO PAINT IN WAY OF TF BOLT CONNECTIONS.
  5. THIRD ANGLE PROJECTION UNLESS NOTED.
  6. ASSEMBLY MARK TO BE STAMPED ON TOP FACE WHERE INDICATED THUS N S F.S
  7. ALL HOLES Ø22 U.N.O.

**PAINT : GALV  
PRECAMBER :**

ERECTION PLAN REFERENCE:  
4526-MP-11

**Xtech Drafting Pty. L td.**  
A.B.N. 69 079 793 122  
14 / 37 - 39 ALBERT RD. MELBOURNE. VIC. AUSTRALIA. 3004  
PH. +61 3 9866 1015 FAX. +61 3 9866 1016 MOB. 0411 566 698

DESIGN ENGINEER:

**BORAL PLASTERBOARD  
COMPOUND BATCHING PLANT  
LEVEL 2  
GRATING**

DRAWN: AWM      CHECKED: XTD

DATE:                      SCALE: 1:5

DRAWING No.      REV.  
**4526-2GR6**

No	REV.	DESCRIPTION	DATE