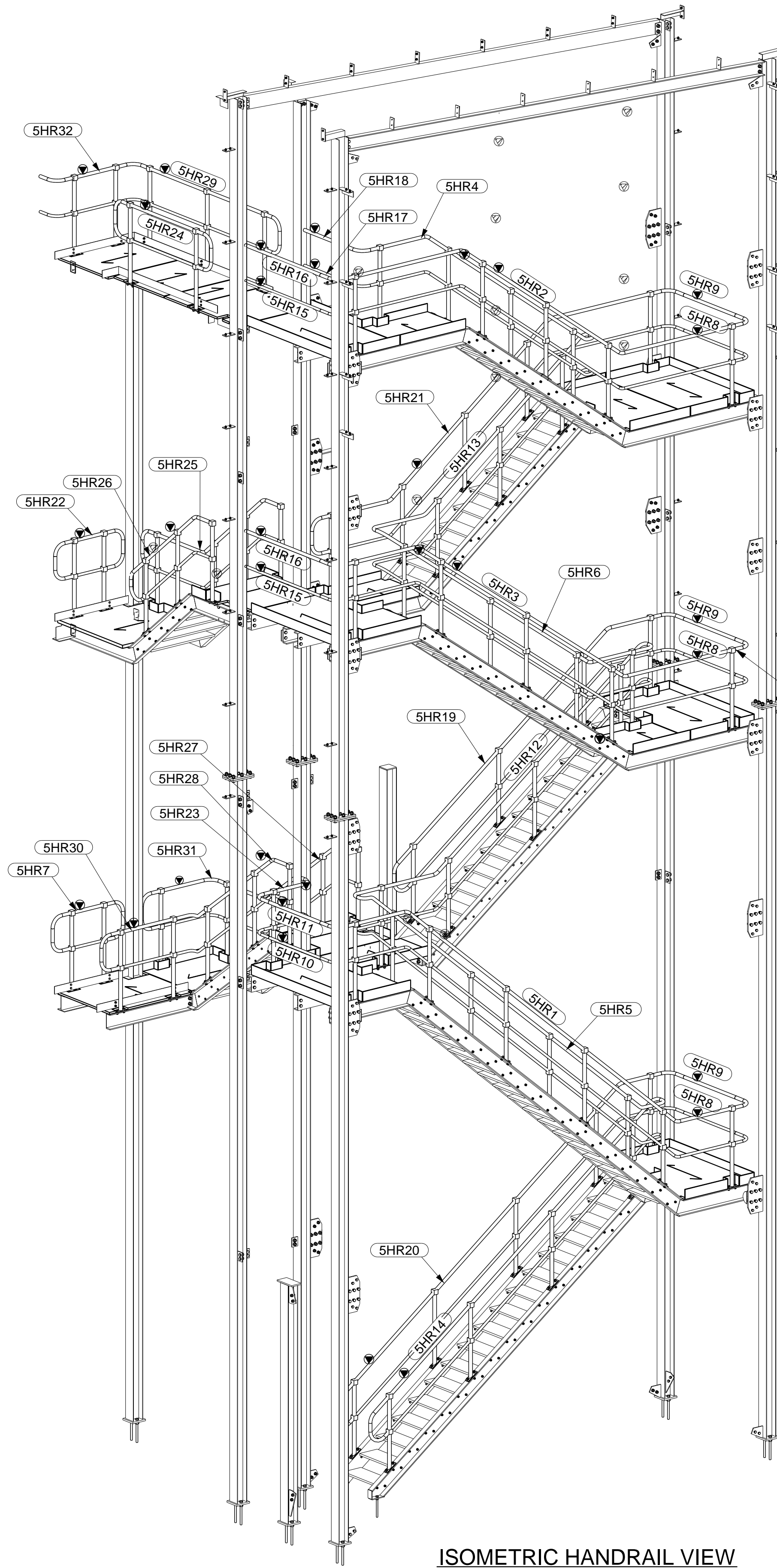


ISOMETRIC HANDRAIL VIEW



ISOMETRIC HANDRAIL VIEW

Ass' bly Mk	Qty	Profile	Finish	Area(m2)	Weight(kg)
5HR1	1	CHS42. 4*3. 2	GALV	2.54	60.38
5HR2	1	CHS42. 4*3. 2	GALV	1.75	42.02
5HR3	1	CHS42. 4*3. 2	GALV	2.00	47.63
5HR4	1	CHS42. 4*3. 2	GALV	1.60	38.22
5HR5	1	CHS42. 4*3. 2	GALV	2.17	51.20
5HR6	1	CHS42. 4*3. 2	GALV	1.83	43.45
5HR7	1	CHS42. 4*3. 2	GALV	0.62	15.00
5HR8	3	CHS33. 7*3. 2	GALV	0.28	6.17
5HR9	3	CHS42. 4*3. 2	GALV	0.36	8.60
5HR10	1	CHS33. 7*3. 2	GALV	0.28	6.17
5HR11	1	CHS42. 4*3. 2	GALV	0.36	8.60
5HR12	1	CHS42. 4*3. 2	GALV	1.84	43.73
5HR13	1	CHS42. 4*3. 2	GALV	1.49	35.25
5HR14	1	CHS42. 4*3. 2	GALV	2.02	47.80
5HR15	2	CHS33. 7*3. 2	GALV	0.25	5.46
5HR16	2	CHS42. 4*3. 2	GALV	0.31	7.35
5HR17	1	CHS33. 7*3. 2	GALV	0.17	3.83
5HR18	1	CHS42. 4*3. 2	GALV	0.22	5.26
5HR19	1	CHS42. 4*3. 2	GALV	1.74	41.37
5HR20	1	CHS42. 4*3. 2	GALV	2.30	54.59
5HR21	1	CHS42. 4*3. 2	GALV	1.85	44.39
5HR22	1	CHS42. 4*3. 2	GALV	0.62	15.00
5HR23	1	CHS42. 4*3. 2	GALV	0.29	7.12
5HR24	1	CHS42. 4*3. 2	GALV	0.82	19.69
5HR25	1	CHS42. 4*3. 2	GALV	1.29	31.24
5HR26	1	CHS42. 4*3. 2	GALV	1.02	24.47
5HR27	1	CHS42. 4*3. 2	GALV	1.20	29.03
5HR28	1	CHS42. 4*3. 2	GALV	0.92	22.10
5HR29	1	CHS42. 4*3. 2	GALV	1.18	28.29
5HR30	1	CHS42. 4*3. 2	GALV	0.77	18.41
5HR31	1	CHS42. 4*3. 2	GALV	0.41	9.92
5HR32	1	CHS42. 4*3. 2	GALV	0.93	22.05
Total for 38 assemblies:				37.28	886.21

ERECTION NOTES

- INDICATES MARKED END OF MEMBER. MEMBERS TO BE ERECTED WITH ASSEMBLY MARK AT THIS LOCATION.
- COLUMNS HAVE ASSEMBLY MARK STAMPED ON NORTH OR EAST FACING FLANGE NEAR BASE OF SHAFT U.N.O.
- VERTICAL BRACING, STAIRS, HANGERS, AND OTHER INCLINED MEMBERS HAVE ASSEMBLY MARK STAMPED ON TOP END. MARKS WITH ASTERISK* ARE STAMPED ON BOTTOM END.
- FIN PLATES FOR CHANNELS ARE ON HEEL UNLESS SHOWN OTHERWISE.
- FIN PLATES FOR BEAMS WILL BE ON NORTH OR WEST SIDE OF BEAM WEB, UNLESS SHOWN OTHERWISE, i.e. ERECT BEAMS TO SOUTH OR EAST SIDE OF CLEAT.

ERECTION PLAN REFERENCE:

No	REV.	DESCRIPTION	DATE
1	A	ISSUED FOR APPROVAL	15.03.12

Xtech Drafting Pty. L td.

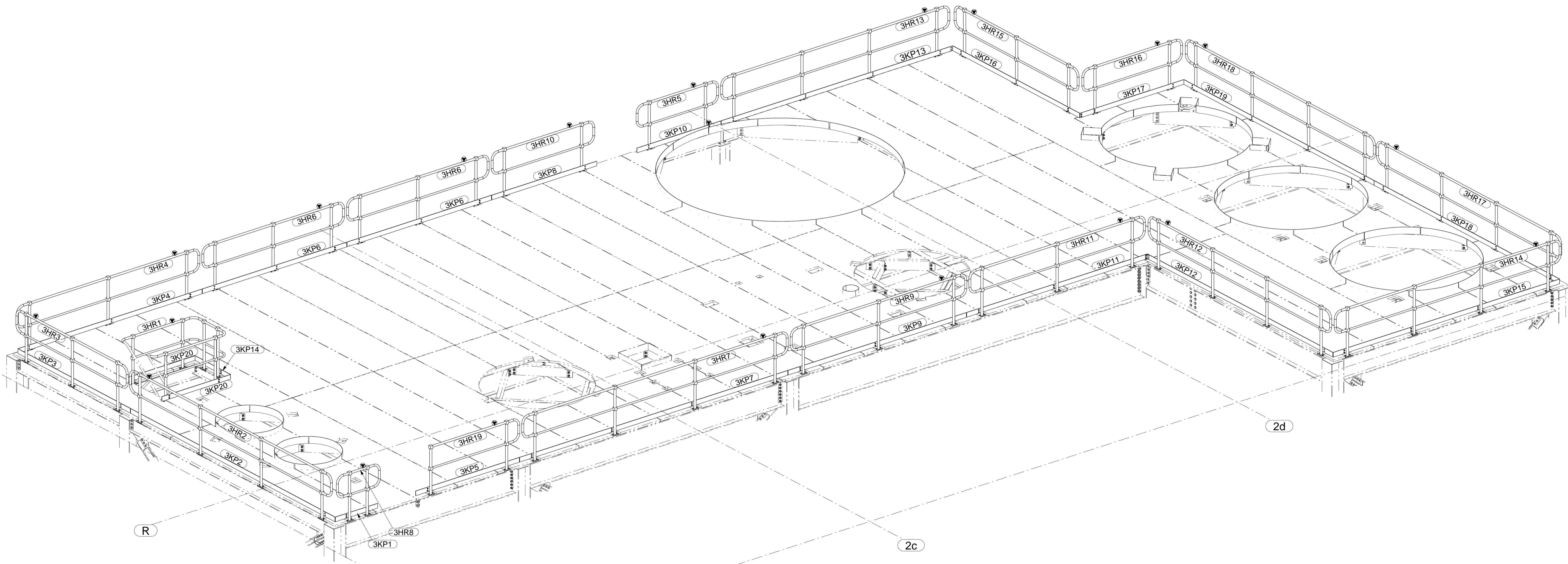
A.B.N. 69 079 793 122
14/37 - 39 ALBERT RD. MELBOURNE, VIC. AUSTRALIA. 3004
PH. +61 3 9866 1015 FAX. +61 3 9866 1016 MOB. 0411 566 698

DESIGN ENGINEER:

BORAL PLASTERBOARD
COMPOUND BATCHING PLANT
NORTH STAIR HANDRAIL ISOMETRIC
ISOMETRIC

DRAWN: AWM
DATE: 15.03.12
CHECKED: XTD
SCALE: 1:40

DRAWING No.
4526-MP-25
REV.
A



HANDRAIL DETAIL - LEVEL 3
ISOMETRIC MARKING PLAN

ERECTION NOTES

1. INDICATES MARKED END OF MEMBER. MEMBERS TO BE ERECTED WITH ASSEMBLY MARK AT THIS LOCATION.
2. COLUMNS HAVE ASSEMBLY MARK STAMPED ON NORTH OR EAST FACING FLANGE NEAR BASE OF SHAFT UNLESS OTHERWISE SHOWN.
3. VERTICAL BRACING, STAIRS, HANGERS, AND OTHER INCLINED MEMBERS HAVE ASSEMBLY MARK STAMPED ON TOP END. MARKS WITH ASTERISK ARE STAMPED ON BOTTOM END.
4. FIN PLATES FOR CHANNELS ARE ON HEEL UNLESS SHOWN OTHERWISE.
5. FIN PLATES FOR BEAMS WILL BE ON NORTH OR WEST SIDE OF BEAM WEB, UNLESS SHOWN OTHERWISE. IN CASE OF BEAMS TO SOUTH OR EAST SIDE OF CLEAT.

ERECTION PLAN REFERENCE:
4526-MP-15 & 17

No	REV	DESCRIPTION	DATE
1	A	ISSUED FOR APPROVAL	27.02.12

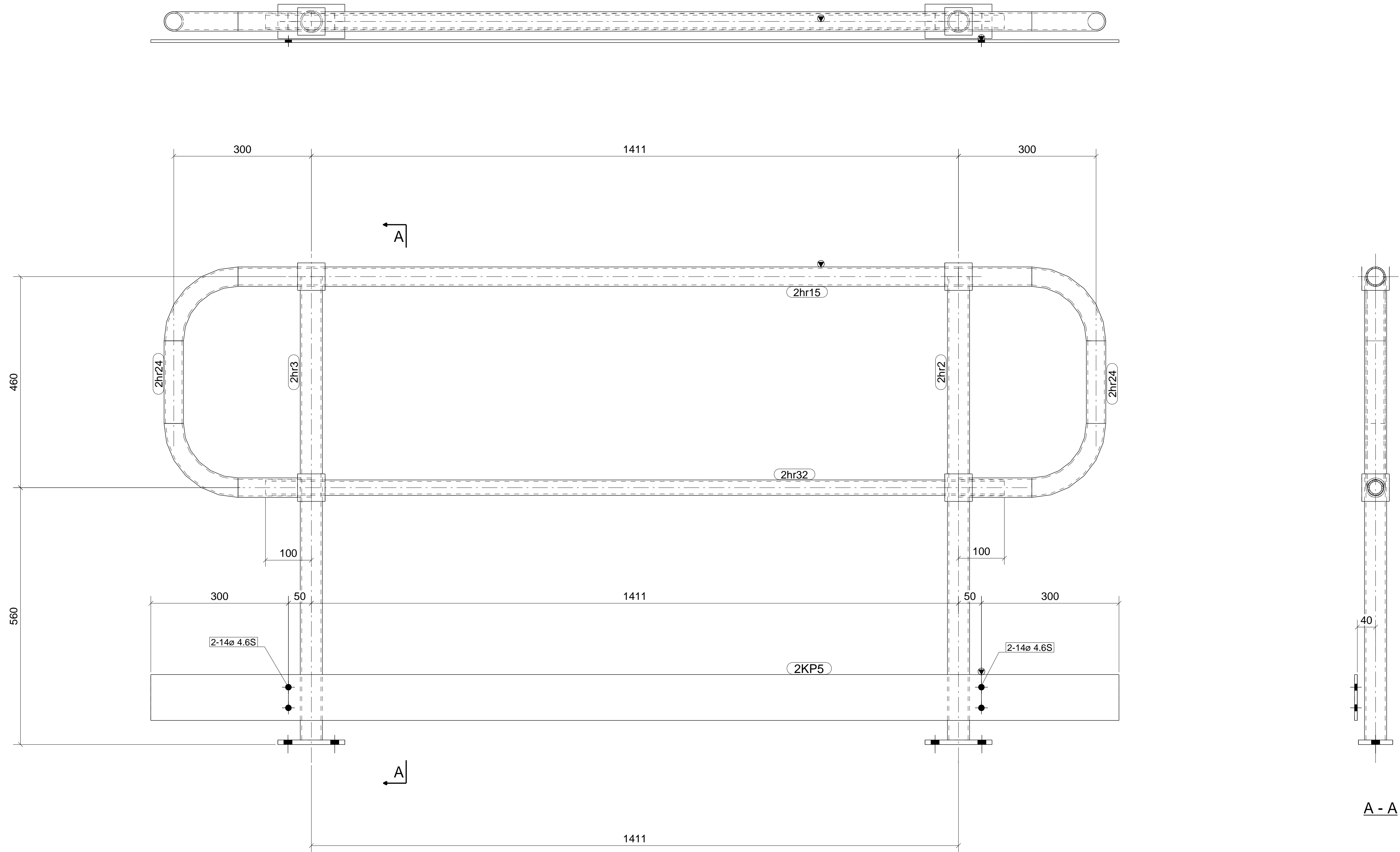
Xtech Drafting Pty. L td.
A.B.N. 69 079 793 122
14 / 37 - 39 ALBERT RD, MELBOURNE, VIC. AUSTRALIA, 3004
PH. +61 3 9866 1015 FAX. +61 3 9866 1016 MOB. 0411 566 698

DESIGN ENGINEER:

**BORAL PLASTERBOARD
COMPOUND BATCHING PLANT
LEVEL 3 - HANDRAIL
ISOMETRIC**

DRAWN: AWM	CHECKED: XTD	DRAWING No.	REV.
DATE: 27.02.12	SCALE: 1:32.5	4526-MP-16	A

HANDRAIL MATERIAL LIST						
ITEM	No.OFF	NAME	PROFILE	LENGTH	ANGLE	REMARKS
		TOTAL LENGTH OF MID RAIL	CHS33.7*3.2	1611		
		TOTAL LENGTH OF TOP RAIL	CHS42.4*3.2	1411		
		TOTAL LENGTH OF KICK PLATE	FLT6*100	2111		
2hr2	1	Std Stanchion 'P'	KPMB-R	CHS48.3*3.2	1020	0° OFFSET= D= 80
2hr3	1	Std Stanchion 'P'	KPMB-L	CHS48.3*3.2	1020	0° OFFSET= D= 80
2hr24	2	Std Horiz. Closure	CHS42.4*3.2	300	0°	



1 RAILING (S) REQUIRED MK 2HR19

GENERAL NOTES

1. WELDS 6 CONT. FILLET (CAT. SP) UNLESS NOTED.
2. ALL BUTT WELDS TO BE FULL PENETRATION (CAT. SP) UNLESS NOTED.
3. ALL NOTCHES TO HAVE 11mm RADIUS AT INTERNAL CORNERS.
4. NO PAINT IN WAY OF TF BOLT CONNECTIONS.
5. THIRD ANGLE PROJECTION UNLESS NOTED.
6. ASSEMBLY MARK TO BE STAMPED ON TOP FACE WHERE INDICATED THUS N S F S
7. ALL HOLES Ø22 U.N.O.

PAINT : GALV
PRECAMBER :

ERECTION PLAN REFERENCE:
4526-MP-10

Xtech Drafting Pty. L td.

A.B.N. 69 079 793 122
14/37 - 39 ALBERT RD. MELBOURNE. VIC. AUSTRALIA. 3004
PH. +61 3 9866 1015 FAX. +61 3 9866 1016 MOB. 0411 566 698

DESIGN ENGINEER:

**BORAL PLASTERBOARD
COMPOUND BATCHING PLANT
LEVEL 2
HANDRAIL**

DRAWN: AWM

CHECKED: XTD

DRAWING No.

REV.

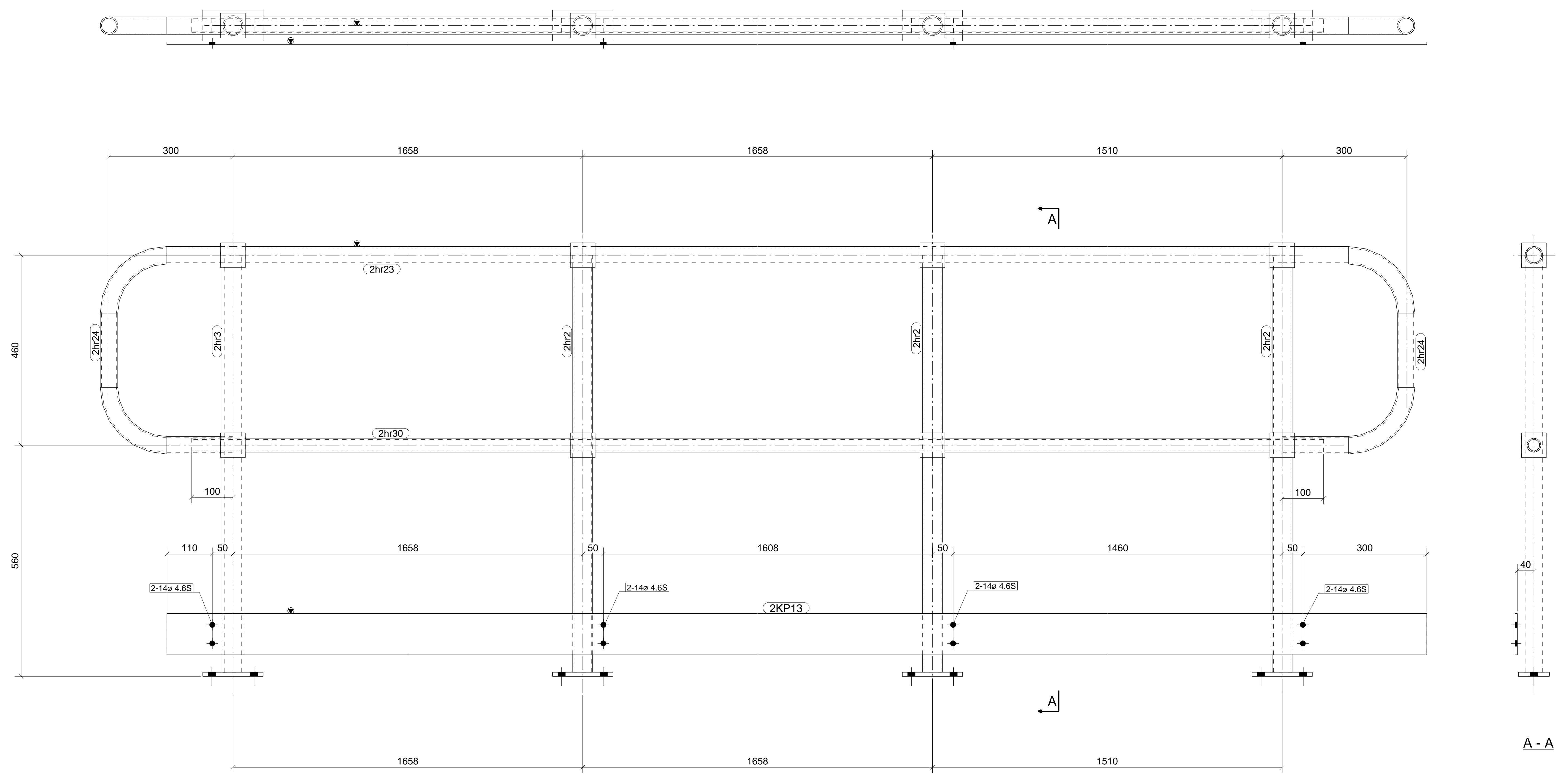
DATE:

SCALE: 1:5

4526-2HR19

No	REV.	DESCRIPTION	DATE

HANDRAIL MATERIAL LIST						
ITEM	No.OFF	NAME	PROFILE	LENGTH	ANGLE	REMARKS
		TOTAL LENGTH OF MID RAIL	CHS33.7*3.2	5026		
		TOTAL LENGTH OF TOP RAIL	CHS42.4*3.2	4826		
		TOTAL LENGTH OF KICK PLATE	FLT6*100	5336		
2hr2	3	Std Stanchion 'P'	KPMB-R	CHS48.3*3.2	1020	0° OFFSET= D= 80
2hr3	1	Std Stanchion 'P'	KPMB-L	CHS48.3*3.2	1020	0° OFFSET= D= 80
2hr24	2	Std Horiz. Closure	CHS42.4*3.2	300	0°	



1 RAILING (S) REQUIRED MK 2HR20

GENERAL NOTES
 1. WELDS 6 CONT. FILLET (CAT. SP) UNLESS NOTED.
 2. ALL BUTT WELDS TO BE FULL PENETRATION (CAT. SP) UNLESS NOTED.
 3. ALL NOTCHES TO HAVE 11mm RADIUS AT INTERNAL CORNERS.
 4. NO PAINT IN WAY OF TF BOLT CONNECTIONS.
 5. THIRD ANGLE PROJECTION UNLESS NOTED.
 6. ASSEMBLY MARK TO BE STAMPED ON TOP FACE WHERE INDICATED THUS ∇ N S \odot F S
 7. ALL HOLES Ø22 U.N.O.

PAINT : GALV
 PRECAMBER :

ERECTION PLAN REFERENCE:
 4526-MP-10

Xtech Drafting Pty. L td.
 A.B.N. 69 079 793 122
 14/37 - 39 ALBERT RD. MELBOURNE. VIC. AUSTRALIA. 3004
 PH. +61 3 9866 1015 FAX. +61 3 9866 1016 MOB. 0411 566 698

DESIGN ENGINEER:

**BORAL PLASTERBOARD
 COMPOUND BATCHING PLANT
 LEVEL 2
 HANDRAIL**

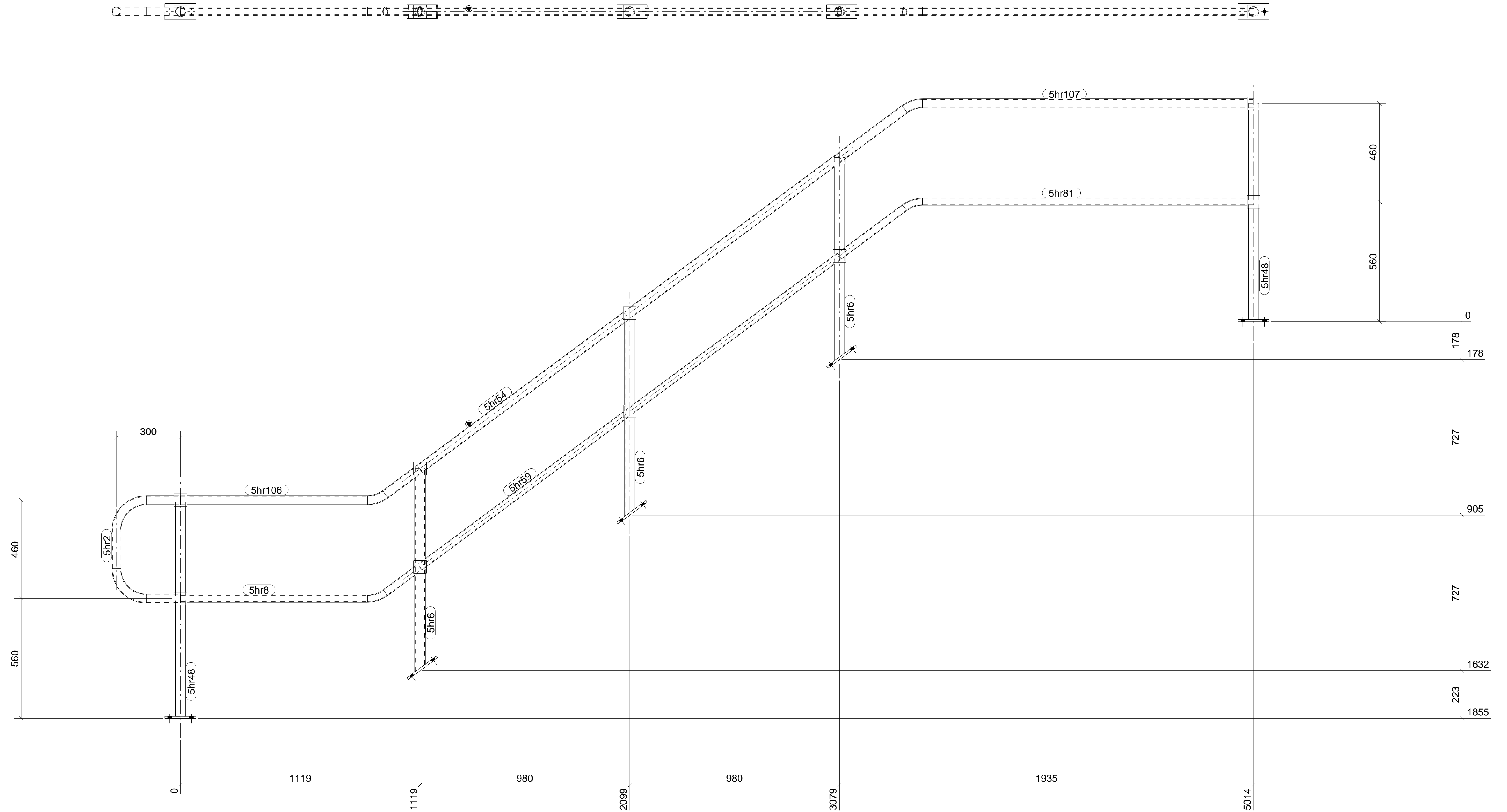
DRAWN: AWM
 CHECKED: XTD
 DATE:
 SCALE: 1:5

DRAWING No. 4526-2HR20
 REV.

No	REV.	DESCRIPTION	DATE

Taka structures

HANDRAIL MATERIAL LIST						
ITEM	No.OFF	NAME	PROFILE	LENGTH	ANGLE	REMARKS
		TOTAL LENGTH OF MID RAIL	CHS33.7*3.2	2440		
		TOTAL LENGTH OF TOP RAIL	CHS42.4*3.2	2443		
5hr6	3	Std Stanchion 'AM'	CHS48.3*3.2	945	37°	OFFSET= D=
5hr48	2	Std Stanchion 'P'	CHS48.3*3.2	1020	0°	OFFSET= D=
5hr2	1	Std Horiz. Closure	CHS42.4*3.2	300	0°	
5hr8	1	Non Std Angle Bend	CHS33.7*3.2	245	143°	L1=245 L2=920
5hr81	1	Non Std Angle Bend	CHS33.7*3.2	425	143°	L1=425 L2=1595
5hr106	1	Non Std Angle Bend	CHS42.4*3.2	245	143°	L1=245 L2=920
5hr107	1	Non Std Angle Bend	CHS42.4*3.2	425	143°	L1=425 L2=1595



1 RAILING (S) REQUIRED MK 5HR21

GENERAL NOTES

- WELDS 6 CONT. FILLET (CAT. SP) UNLESS NOTED.
- ALL BUTT WELDS TO BE FULL PENETRATION (CAT. SP) UNLESS NOTED.
- ALL NOTCHES TO HAVE 11mm RADIUS AT INTERNAL CORNERS.
- NO PAINT IN WAY OF TF BOLT CONNECTIONS.
- THIRD ANGLE PROJECTION UNLESS NOTED.
- ASSEMBLY MARK TO BE STAMPED ON TOP FACE WHERE INDICATED THUS N S F S
- ALL HOLES Ø22 U.N.O.

PAINT : GALV
PRECAMBER :

ERECTION PLAN REFERENCE:
4526-MP-25

Xtech Drafting Pty. L td.

A.B.N. 69 079 793 122
14/37 - 39 ALBERT RD. MELBOURNE. VIC. AUSTRALIA. 3004
PH. +61 3 9866 1015 FAX. +61 3 9866 1016 MOB. 0411 566 698

DESIGN ENGINEER:

BORAL PLASTERBOARD
COMPOUND BATCHING PLANT
NORTH STAIR TOWER
HANDRAIL

DRAWN: AWM
DATE: 15.03.12

CHECKED: XTD
SCALE: 1:10

DRAWING No.
4526-5HR21

REV.
A

No	REV.	DESCRIPTION	DATE
1	A	ISSUED FOR APPROVAL	15.03.12

Tekla structures