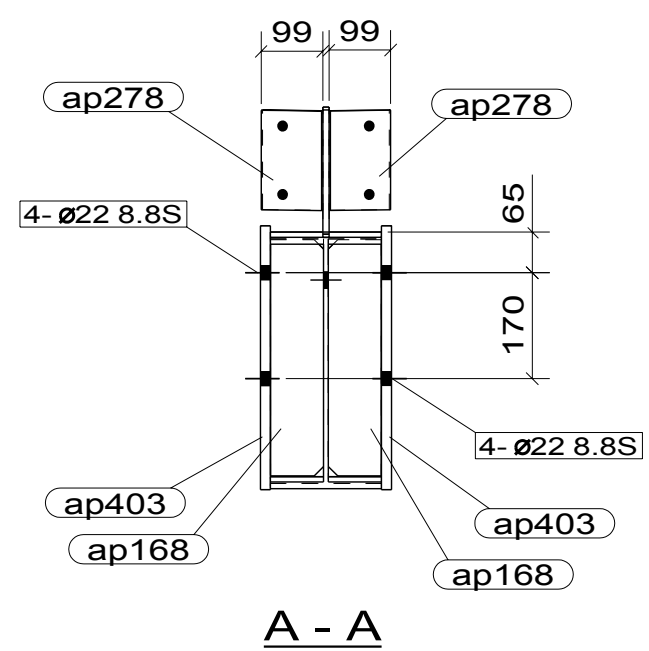
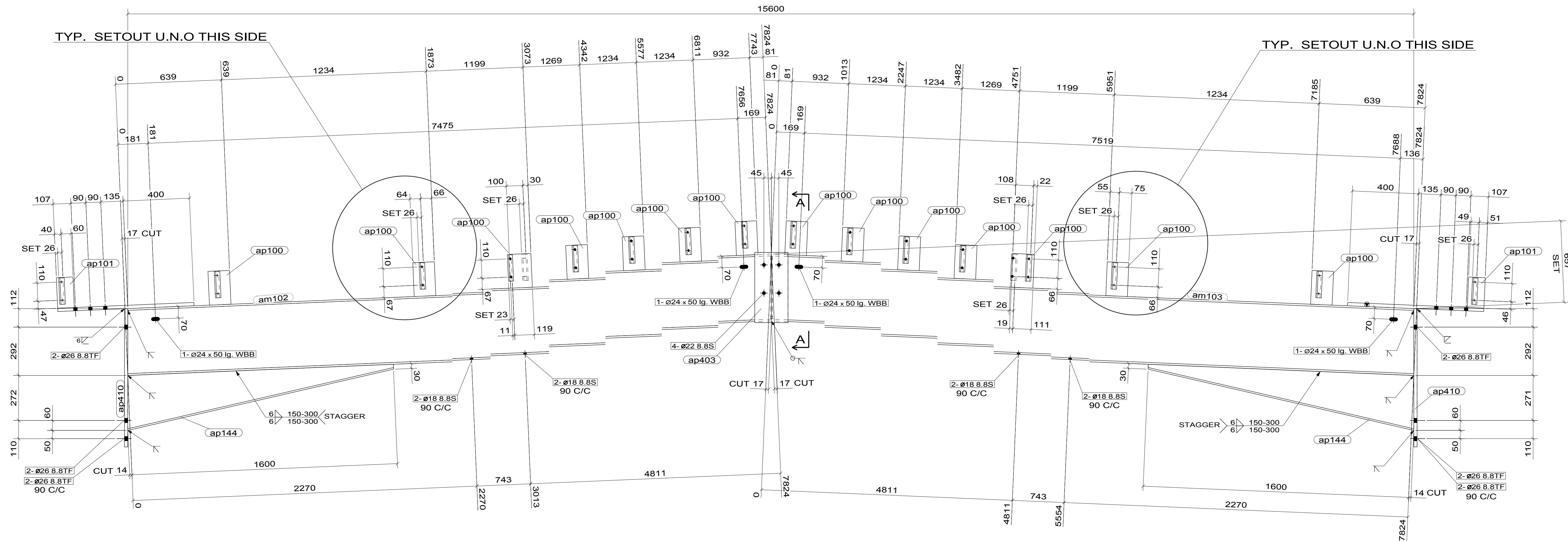
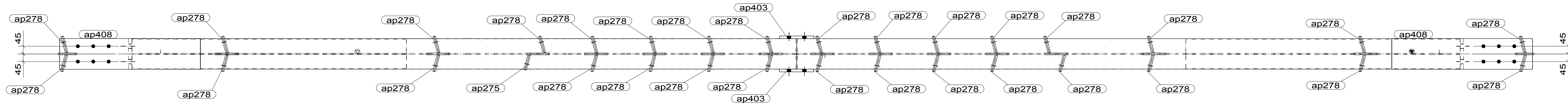


MATERIAL LIST FOR ONE ASSEMBLY MK				1R9	1	Ass. Req'd.
ITEM	No.Off	SECTION	LENGTH	GRADE	WEIGHT(kg)	AREA(m ²)
am102	1	UB410*54	7824	300PLUS	423.2	11.6
am103	1	UB410*54	7824	300PLUS	423.2	11.6
ap100	14	FLT10*130	204	250	2.1	0.1
ap101	2	FLT10*100	184	250	1.4	0.0
ap144	2	UB360*45	1724	250	77.4	2.3
ap168	2	PLT10*85	379	250	2.5	0.1
ap275	1	FLT8*90	160	250	0.9	0.0
ap278	31	FLT8*100	160	250	1.0	0.0
ap403	2	FLT16*200	423	250	10.6	0.2
ap408	2	FLT20*180	821	250	23.2	0.3
ap410	2	FLT20*180	834	250	23.6	0.3
TOTAL					1185.1	31.8



1 RAFTER (S) REQUIRED MK 1R9

- GENERAL NOTES**
- WELDS 6 CONT. FILLET (CAT. SP) UNLESS NOTED.
 - ALL BUTT WELDS TO BE FULL PENETRATION (CAT. SP) UNLESS NOTED.
 - ALL NOTCHES TO HAVE 11mm RADIUS AT INTERNAL CORNERS.
 - NO PAINT IN WAY OF TF BOLT CONNECTIONS.
 - THIRD ANGLE PROJECTION UNLESS NOTED.
 - ASSEMBLY MARK TO BE STAMPED ON TOP FACE WHERE INDICATED THUS ∇ N S F S

PAINT : G.O.Z.P.
PRECAMBER : 25mm

No.	DATE	ISSUED FOR APPROVAL	DETAILS	REVISIONS
A	27.02.04	ISSUED FOR APPROVAL		

Ktech Drafting Pty. Ltd.
A.B.N. 30 105 598 885
171 DOW ST, PORT MELBOURNE, VICTORIA, AUST. 3207
PH (03) 9636 3616 MOBILE 0411 566 698

STILCON HOLDINGS PTY. LTD.
37 LINK COURT BROOKLYN 3025 PH.9314 1611 FAX. 9315 1559

CONSTRUCTION ENGINEERING PTY. LTD.
WELLINGTON VILLAGE SHOPPING CENTRE

RAFTER

DRAWN: AM	CHECKED: AM	DRAWING No.	REV.
DATE: 18.02.2004	SCALE: 1/10	4107- 1R9	A

ERECTION PLAN REFERENCE:
4107-MP-02