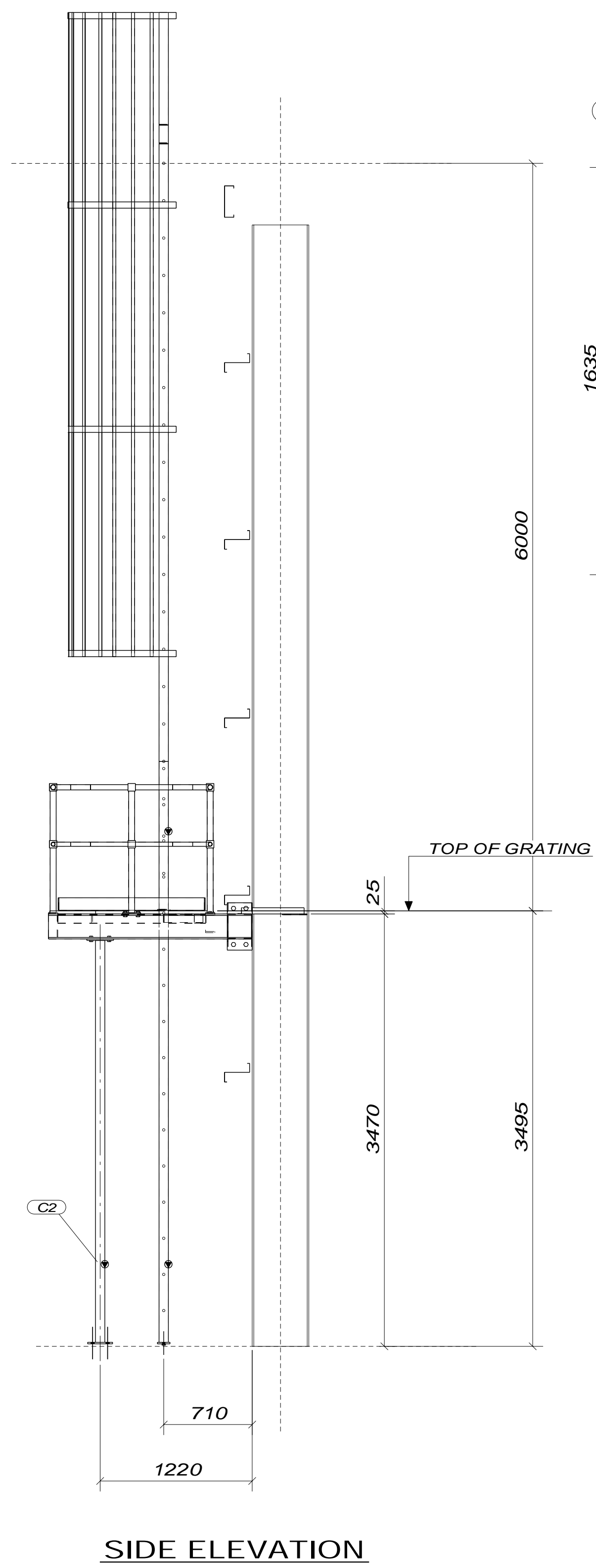
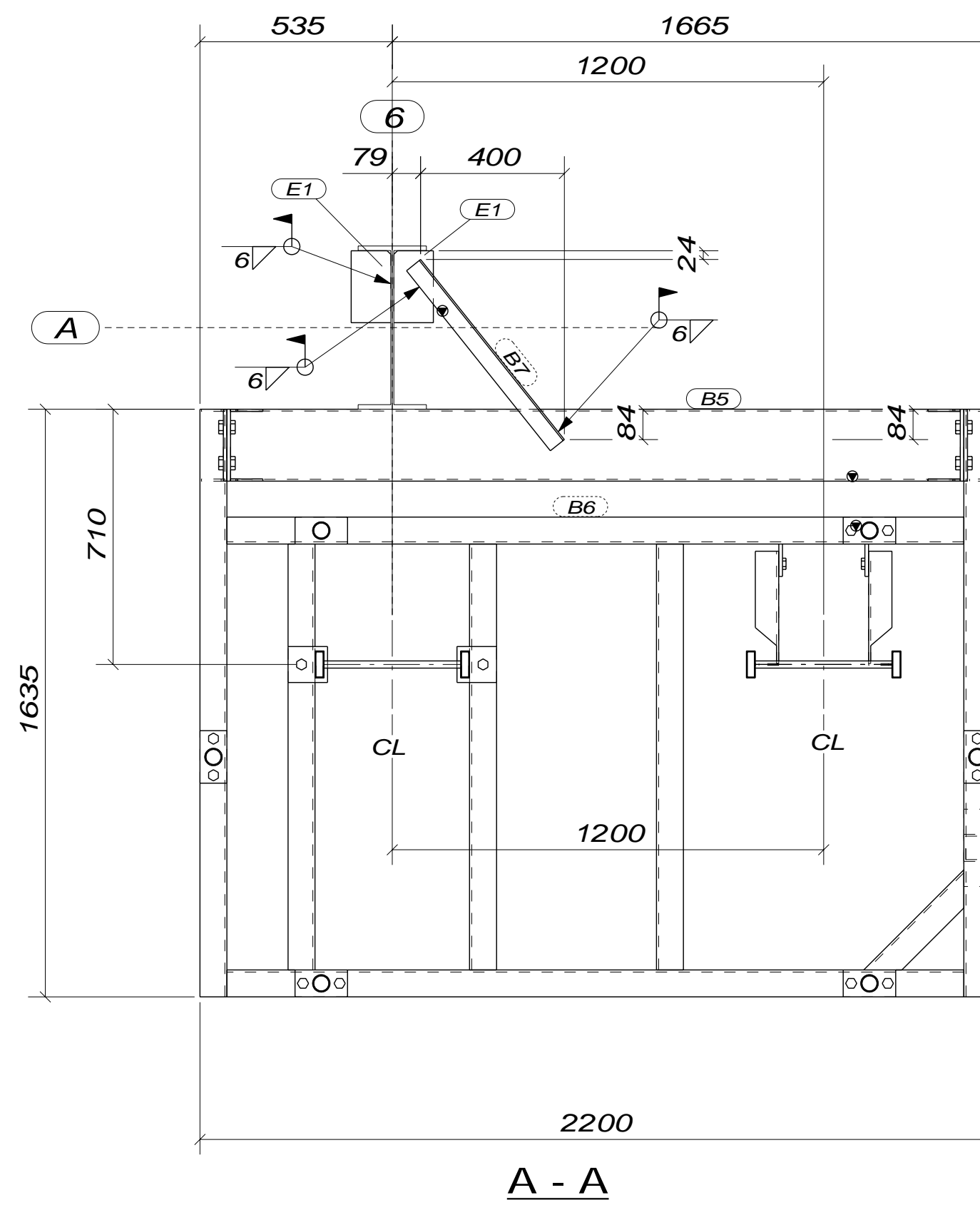


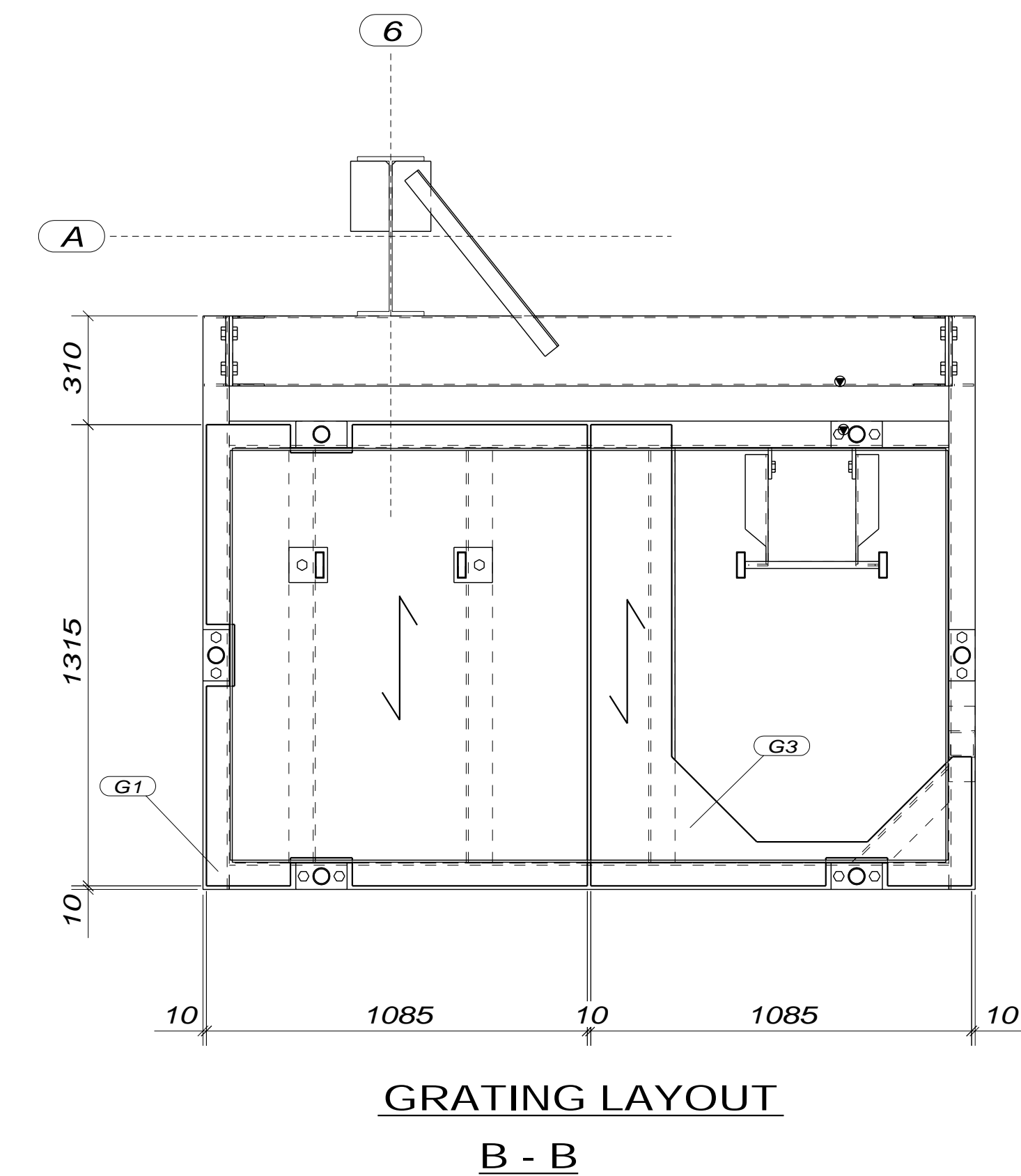
FRONT ELEVATION



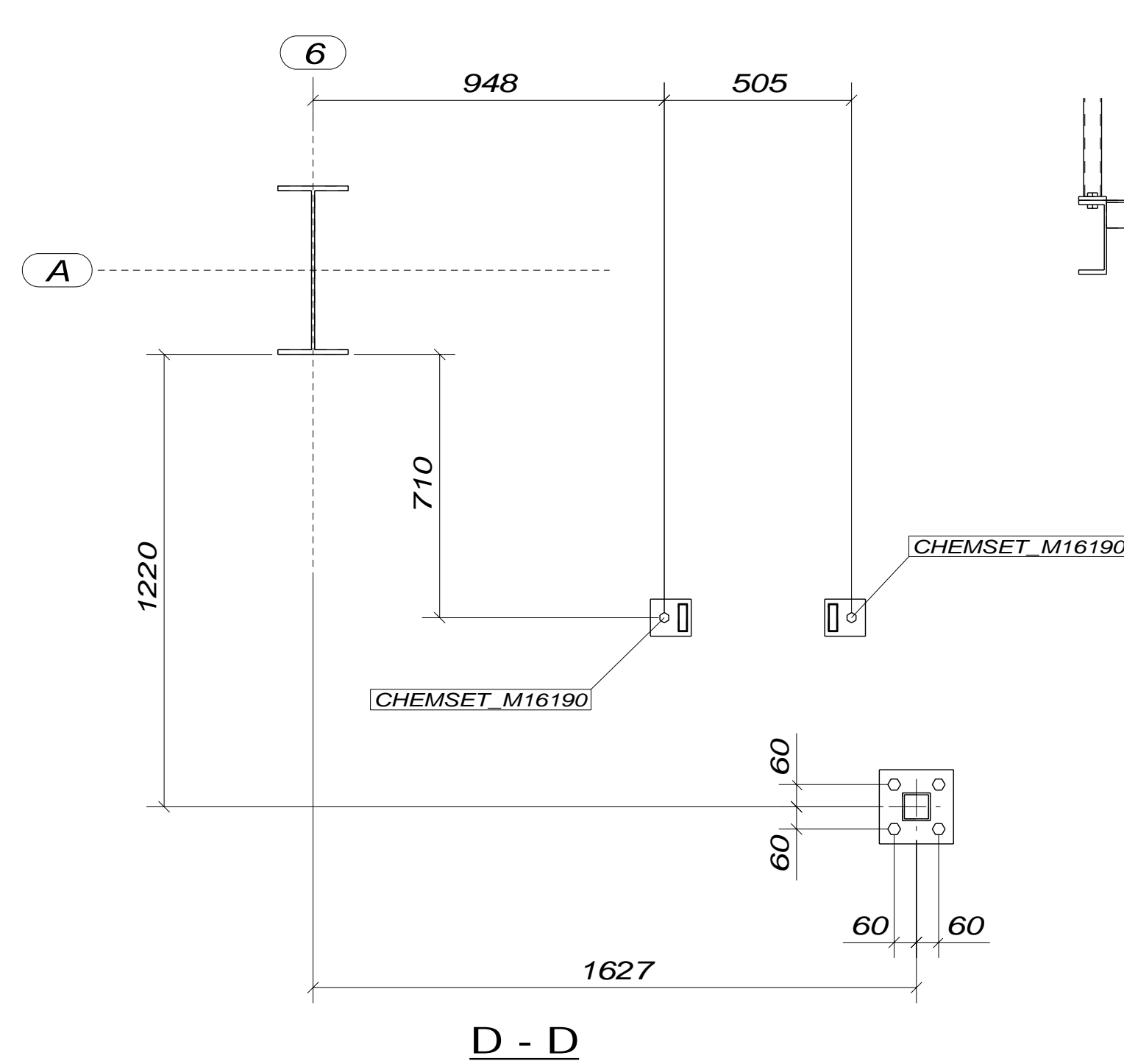
SIDE ELEVATION



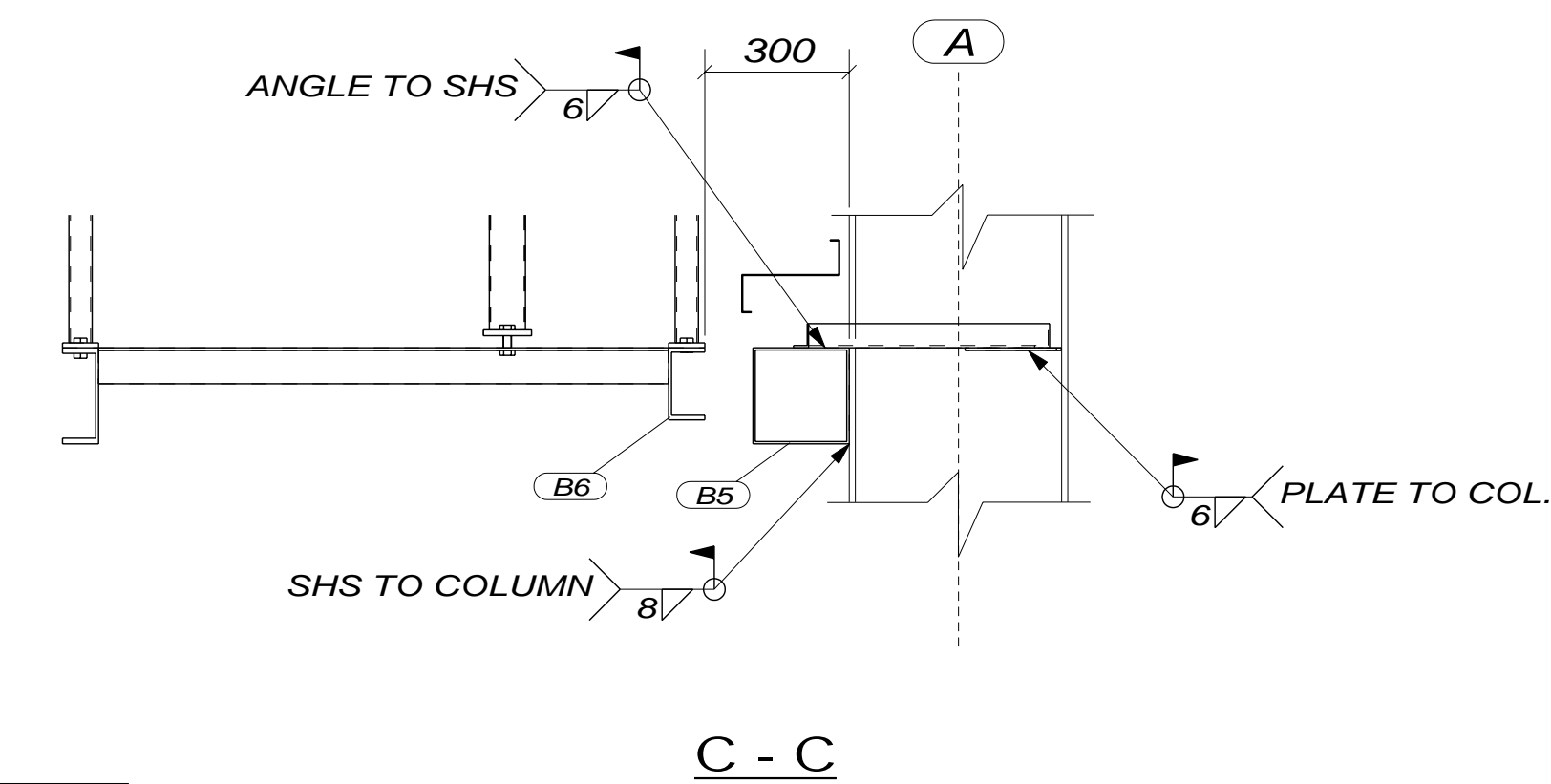
A - A



GRATING LAYOUT  
B - B



D - D



C - C



ERECTION NOTES

- INDICATES MARKED END OF MEMBER. MEMBERS TO BE ERECTED WITH ASSEMBLY MARK AT THIS LOCATION.
- COLUMNS HAVE ASSEMBLY MARK STAMPED ON NORTH OR WEST FACING FLANGE NEAR BASE OF SHAFT U.N.O.
- VERTICAL BRACING, STAIRS, HANGERS, AND OTHER INCLINED MEMBERS HAVE ASSEMBLY MARK STAMPED ON TOP END. MARKS WITH ASTERISK\* ARE STAMPED ON BOTTOM END.
- FIN PLATES FOR CHANNELS ARE ON HEEL UNLESS SHOWN OTHERWISE.
- FIN PLATES FOR BEAMS WILL BE ON NORTH OR WEST SIDE OF BEAM WEB, UNLESS SHOWN OTHERWISE, i.e. ERECT BEAMS TO SOUTH OR EAST SIDE OF CLEAT.

ERECTION PLAN REFERENCE:

No.	DATE	DETAILS
A	05.09.02	ISSUED FOR APPROVAL
B	13.09.02	GENERAL REVISION AND COLUMN ADDED
REVISIONS		

Xtech Drafting Pty. L td.

A.B.N. 30 105 598 865  
55 PATTERSON ST, MIDDLE PARK VICTORIA AUST. 3206  
PH (03) 9534 1292 MOBILE 0411 566 698

ATLAS STEEL FABRICATIONS

8 LOUVAIN STREET COBURG. 3058 PH.9354 2334 FAX. 9354 2654

DESIGN ENGINEER:

MURRAY GOULBURN GLOBAL  
DISTRIBUTION FACILITY  
ROOF ACCESS LADDERS  
MARKING PLAN - CROSS DOCK BLDG.

DRAWN: AM

CHECKED: AM

DRAWING No.

REV.

DATE: 30.08.2002

SCALE: 1/15

MP102

B